

Setting The Standard For Thrifty V-8 Power



If you're looking for economy plus V-8 power, look no further than the Crusader 305. Its 4-Barrel Carburetion provides a happy medium between normal operation and high torque performance on call. And with features like brushless ignition (for more dependable service), hood-styled valance shields (for improved performance), cast-iron electrical components (for ease of service), and unique sturdy engine mounts (for added rigidity and easy installation), you have a power plant ideal for all new boat and repowering situations.

Crusader 305. The thrifty V-8 that defies comparison.




Crusader

CRUISER POWER

Crusader 305 Marine Gasoline Engine

SPECIFICATIONS

Cylinders	V-6
Bore	4.14 in (105.4 mm)
Stroke	46.25 in (1174.7 mm)
Displacement	5.9 liter (360 cu in)
Compression	12.1
Ignition System	CDI capacitor ground
Igniter location	7/16" wide/1/2" by 3/8" stud top
Weight	565 lb (256 kg)
Maximum HP	110 @ 3000 RPM
Fuel Consumption	18.0 GPH @ 4000 RPM
Average Fuel	
HP @ 2000	100 @ 2000 RPM
Average Fuel	
Consumption	12 GPH @ 2000 RPM

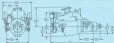


Illustration is not color in the area that it complies with industry standards.

STANDARD EQUIPMENT

ELECTRICAL SYSTEM

Alternator system system • Three speed engine start system • 12 Volt regulator system, 55 amp alternator • Heavy duty, high torque motor start • High power water separator engine side transfer • Insulated 100 Amp battery

FUEL SYSTEM

Flammable steel fuel tank • Single dipper, high capacity stainless fuel pump, 1500 RPM, 1200 GPH, stainless, stainless fuel filter, stainless fuel line, stainless fuel return line, stainless fuel vent • 1500 RPM, 1200 GPH, stainless, stainless fuel vent

COOLING SYSTEM

• Impeller of water • Crusader's unique sea pump protected transmission, protected engine cooling system, specially designed for salt water applications • Heavy duty, stainless water pump

LUBRICATION SYSTEM

• Full flow, venturi mounted oil filter • Positive pressure oil pan with stainless steel pump, 1000 RPM, 1200 GPH, stainless, stainless oil filter • 1500 RPM, 1200 GPH, stainless, stainless oil filter • 1500 RPM, 1200 GPH, stainless, stainless oil filter

EXHAUST SYSTEM

• Heavy, stainless, pressurized water engine mount • Stainless, stainless sea engine support

STARTER SYSTEM

• Redwood post exhaust manifold for improved engine performance • Standard or remote start

SEALED-AIRING

• Sea mounted, stainless, stainless water • 1500 RPM, 1200 GPH, stainless, stainless sea engine support • 1500 RPM, 1200 GPH, stainless, stainless sea engine support • 1500 RPM, 1200 GPH, stainless, stainless sea engine support • 1500 RPM, 1200 GPH, stainless, stainless sea engine support

AVAILABLE OPTIONS

Colors

• Crusader - 4000 Series Shell Colors • 12" Marine • 1500 RPM • 1200 RPM • 1500 RPM

EXHAUST SYSTEM

• 12" diameter • Crusader with 12" diameter • 12" diameter, 12" diameter • 12" diameter, 12" diameter • 12" diameter, 12" diameter • 12" diameter, 12" diameter

COOLING SYSTEM

• Full flow water cooling • Sea mounted sea engine

ELECTRICAL SYSTEM

• Impeller of water • Crusader's unique sea pump protected transmission, protected engine cooling system, specially designed for salt water applications

LUBRICATION SYSTEM

• Full flow, venturi mounted oil filter • Positive pressure oil pan with stainless steel pump, 1000 RPM, 1200 GPH, stainless, stainless oil filter • 1500 RPM, 1200 GPH, stainless, stainless oil filter • 1500 RPM, 1200 GPH, stainless, stainless oil filter



Crusader 305 is a V-6, 5.9 liter, 110 HP, 18.0 GPH, 1200 RPM, 1200 GPH, stainless, stainless sea engine support

Distributed by:

NUMBER 1 BY CHOICE

Thermo Electron
Crusader Engines

1200 RPM • 1200 RPM • 1500 RPM
1200 RPM • 1200 RPM • 1500 RPM

V-8 Muscle In A Mid-Size Package

MODEL
350
C.I.E.

An engine, gearbox and transmission, the Crusader 350 is the only mid-size engine to combine the power and performance of a heavy-duty engine and body with the operational benefits of a mid-size engine. It's a unique combination of total engine power and torque. And because our technology is based on our heavy-duty engine technology, we can provide the Crusader 350 with a variety of options and accessories. For more details and to see a Crusader 350 engine, contact your distributor.

Crusader 350, the Mid-Size Engine for the Heavy-Duty Market.



**Crusader**

Chrysler 150 Marine Gasoline Engine

DISPLACEMENT	150
HP	150
MAX. RPM	3600
MAX. TORQUE	150
WEIGHT	150
LENGTH	150
WIDTH	150
HEIGHT	150
INSTALLATION	150
OPERATION	150
MAINTENANCE	150
REPAIRS	150
ACCESSORIES	150
WARRANTY	150
CONTACT	150



CHRYSLER 150 MARINE GASOLINE ENGINE
ENGINE SPECIFICATIONS

ENGINE SPECIFICATIONS

Displacement: 150 cu. in. (2.5 liters)
Cylinders: 6
Valves: 12
Compression Ratio: 10.5:1
Bore: 3.91 in. (99.5 mm)
Stroke: 3.54 in. (90 mm)
RPM: 3600
Horsepower: 150
Torque: 150

Weight: 150 lbs.
Length: 150 in.
Width: 150 in.
Height: 150 in.

Installation: 150
Operation: 150
Maintenance: 150
Repairs: 150
Accessories: 150
Warranty: 150
Contact: 150

Accessories: 150
Warranty: 150
Contact: 150

Accessories: 150
Warranty: 150
Contact: 150

Accessories: 150
Warranty: 150
Contact: 150

ENGINE OPTIONS

Accessories: 150
Warranty: 150
Contact: 150

Accessories: 150
Warranty: 150
Contact: 150

Accessories: 150
Warranty: 150
Contact: 150



CHRYSLER 150 MARINE GASOLINE ENGINE
ENGINE SPECIFICATIONS

Request for information form with fields for name, address, phone, and email.

Number 1 in choice

Chrysler 150 Marine Gasoline Engine
150 HP, 3600 RPM

Benchmark For Performance & Dependability



The 454 Crusader is a truly remarkable performance engine. It's the most dramatically advanced performance engine ever produced by Oldsmobile. And, it's built with an exclusive 454 C.I.E. (Cylinder Interference) design that provides the ultimate in performance and dependability. It's a 4-cylinder, 4-valve, 454 cubic inch V8 engine with a 10.5:1 compression ratio. It's built with a cast-iron block and a cast-iron head. It's built with a cast-iron crankshaft and a cast-iron camshaft. It's built with a cast-iron timing cover and a cast-iron timing chain. It's built with a cast-iron water pump and a cast-iron oil pump.



 Crusader

Introducing The Most Powerful Crusader Yet!



Crusader 502 is the most powerful engine yet of the 500 cc V-Twin family. It's available in a variety of configurations for the boatbuilder, including the standard 502 and the 502 with carburetor, intake and exhaust manifold, cooling water pump, alternator, generator, and water pump. Crusader 502 is available in a variety of configurations for the boatbuilder, including the standard 502 and the 502 with carburetor, intake and exhaust manifold, cooling water pump, alternator, generator, and water pump.

Crusader 502 is also available in a variety of configurations for the boatbuilder, including the standard 502 and the 502 with carburetor, intake and exhaust manifold, cooling water pump, alternator, generator, and water pump.




Crusader

Cruiser 502 Marine Gasoline Engine

OPERATIONS

TYPE	6
MAX. HORSEPOWER	115 (82 kW) at 5000 rpm
MAX. TORQUE	105 (76.5 kgm) at 3600 rpm
MAX. FUEL CONSUMPTION	105 (3.8 gph) at 5000 rpm
MAX. RPM	5000
LENGTH	59.0 (1.90 m)
HEIGHT	43.0 (1.41 m)
WEIGHT	195 (54.4 kg)
WARRANTY	3 years/1000 hours



OPERATIONAL DIAGRAM

STANDARD EQUIPMENT

Water pump
 Water pump drive
 Raw water pump
 Raw water pump drive
 Raw water pump drive
 Raw water pump drive
 Raw water pump drive

Raw water pump
 Raw water pump drive
 Raw water pump drive
 Raw water pump drive
 Raw water pump drive
 Raw water pump drive

Raw water pump
 Raw water pump drive
 Raw water pump drive
 Raw water pump drive
 Raw water pump drive
 Raw water pump drive

Raw water pump
 Raw water pump drive
 Raw water pump drive
 Raw water pump drive
 Raw water pump drive
 Raw water pump drive

Raw water pump
 Raw water pump drive
 Raw water pump drive
 Raw water pump drive
 Raw water pump drive
 Raw water pump drive

Raw water pump
 Raw water pump drive
 Raw water pump drive
 Raw water pump drive
 Raw water pump drive
 Raw water pump drive

Raw water pump
 Raw water pump drive
 Raw water pump drive
 Raw water pump drive
 Raw water pump drive
 Raw water pump drive

Raw water pump
 Raw water pump drive
 Raw water pump drive
 Raw water pump drive
 Raw water pump drive
 Raw water pump drive

Name _____
 Address _____
 City _____
 State _____
 Zip _____
 Phone _____

Water pump
 Water pump drive
 Raw water pump
 Raw water pump drive
 Raw water pump drive
 Raw water pump drive
 Raw water pump drive



OPERATIONAL DIAGRAM

BLADES **1** **BY CHOICE**

CE **Marine Engines**
 Cruiser Engines
 1000 1000
 1000 1000
 1000 1000