



DAEWOO MARINE DIESEL ENGINE

Simple, Yet Sophisticated The Perfect Combination

MD136

- Compact Design
- Easy Maintenance
- Competitive Pricing



Key Specifications

MD136A	MD136B	MD136C	
Displacement (liters)	2.6	2.6	2.6
Displacement (cu. in.)	159	159	159
Power (hp)	44	55	66
Power (kW)	32	40	48
Rated rpm	3000	3000	3000
Rated torque (ft.-lb.)	18.3	23.1	27.9
Rated torque (N-m)	25	32	38
Maximum torque (ft.-lb.)	23.1	29.4	35.6
Maximum torque (N-m)	32	41	49
Rated speed (rpm)	3000	3000	3000
Rated speed (rpm)	2400	2400	2400
Rated speed (rpm)	1800	1800	1800
Rated speed (rpm)	1200	1200	1200
Rated speed (rpm)	900	900	900
Rated speed (rpm)	750	750	750
Rated speed (rpm)	600	600	600
Rated speed (rpm)	450	450	450
Rated speed (rpm)	300	300	300
Rated speed (rpm)	150	150	150
Rated speed (rpm)	75	75	75
Rated speed (rpm)	37.5	37.5	37.5
Rated speed (rpm)	18.75	18.75	18.75
Rated speed (rpm)	9.375	9.375	9.375

*Optional for 1800, 2400, 3000 rpm configurations

Performance Graphs (1500 rpm)



For Efficiency

ENGINE FEATURES



CONTROL SYSTEM



Built To Higher Levels Of

MD136T

- High Fuel Economy
- Top Durability
- Enhancing Performance



© 2001 Deere & Company. All rights reserved.

■ Key Characteristics

	MD136T	MD135T
Net installed horsepower	135	130
Rated power	135	130
Rated torque	310 lb-ft @ 1300 rpm	300 lb-ft @ 1300 rpm
Operating speed	1800 rpm	1800 rpm
Rated speed	1300 rpm	1300 rpm
Rated torque	300 lb-ft @ 1300 rpm	300 lb-ft @ 1300 rpm
Rated fuel consumption	6.5 gph @ 1300 rpm	6.5 gph @ 1300 rpm
Rated torque	300 lb-ft @ 1300 rpm	300 lb-ft @ 1300 rpm
Rated fuel consumption	6.5 gph @ 1300 rpm	6.5 gph @ 1300 rpm
Rated torque	300 lb-ft @ 1300 rpm	300 lb-ft @ 1300 rpm
Rated fuel consumption	6.5 gph @ 1300 rpm	6.5 gph @ 1300 rpm
Rated torque	300 lb-ft @ 1300 rpm	300 lb-ft @ 1300 rpm
Rated fuel consumption	6.5 gph @ 1300 rpm	6.5 gph @ 1300 rpm
Rated torque	300 lb-ft @ 1300 rpm	300 lb-ft @ 1300 rpm
Rated fuel consumption	6.5 gph @ 1300 rpm	6.5 gph @ 1300 rpm
Rated torque	300 lb-ft @ 1300 rpm	300 lb-ft @ 1300 rpm
Rated fuel consumption	6.5 gph @ 1300 rpm	6.5 gph @ 1300 rpm
Rated torque	300 lb-ft @ 1300 rpm	300 lb-ft @ 1300 rpm
Rated fuel consumption	6.5 gph @ 1300 rpm	6.5 gph @ 1300 rpm
Rated torque	300 lb-ft @ 1300 rpm	300 lb-ft @ 1300 rpm
Rated fuel consumption	6.5 gph @ 1300 rpm	6.5 gph @ 1300 rpm
Rated torque	300 lb-ft @ 1300 rpm	300 lb-ft @ 1300 rpm
Rated fuel consumption	6.5 gph @ 1300 rpm	6.5 gph @ 1300 rpm
Rated torque	300 lb-ft @ 1300 rpm	300 lb-ft @ 1300 rpm
Rated fuel consumption	6.5 gph @ 1300 rpm	6.5 gph @ 1300 rpm
Rated torque	300 lb-ft @ 1300 rpm	300 lb-ft @ 1300 rpm
Rated fuel consumption	6.5 gph @ 1300 rpm	6.5 gph @ 1300 rpm
Rated torque	300 lb-ft @ 1300 rpm	300 lb-ft @ 1300 rpm
Rated fuel consumption	6.5 gph @ 1300 rpm	6.5 gph @ 1300 rpm
Rated torque	300 lb-ft @ 1300 rpm	300 lb-ft @ 1300 rpm
Rated fuel consumption	6.5 gph @ 1300 rpm	6.5 gph @ 1300 rpm
Rated torque	300 lb-ft @ 1300 rpm	300 lb-ft @ 1300 rpm
Rated fuel consumption	6.5 gph @ 1300 rpm	6.5 gph @ 1300 rpm
Rated torque	300 lb-ft @ 1300 rpm	300 lb-ft @ 1300 rpm
Rated fuel consumption	6.5 gph @ 1300 rpm	6.5 gph @ 1300 rpm
Rated torque	300 lb-ft @ 1300 rpm	300 lb-ft @ 1300 rpm
Rated fuel consumption	6.5 gph @ 1300 rpm	6.5 gph @ 1300 rpm
Rated torque	300 lb-ft @ 1300 rpm	300 lb-ft @ 1300 rpm
Rated fuel consumption	6.5 gph @ 1300 rpm	6.5 gph @ 1300 rpm
Rated torque	300 lb-ft @ 1300 rpm	300 lb-ft @ 1300 rpm
Rated fuel consumption	6.5 gph @ 1300 rpm	6.5 gph @ 1300 rpm
Rated torque	300 lb-ft @ 1300 rpm	300 lb-ft @ 1300 rpm
Rated fuel consumption	6.5 gph @ 1300 rpm	6.5 gph @ 1300 rpm
Rated torque	300 lb-ft @ 1300 rpm	300 lb-ft @ 1300 rpm
Rated fuel consumption	6.5 gph @ 1300 rpm	6.5 gph @ 1300 rpm

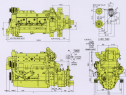
Net installed horsepower based on ISO 8528-3.

■ Performance / Fuel Consumption



Engineering Efficiency.

ENGINE DESIGN



REGULATOR DESIGN

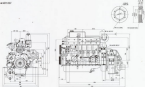


Today's



INSTALLATION

WARNING:



INSTALLATION DIMENSIONS



Ensure Maximum Life Optimum Performance

MD188T

- Reduced Fuel Relative Power
- Maximum Reliability
- Wide Manoeuvrability
- High Performance And Durability



MAIN SPECIFICATION

	188T	188T
Max. Output Power	1880kW (2560hp)	1880kW (2560hp)
Maximum RPM	1800	1800
Max. Torque	1500kgm (10780kg)	1500kgm (10780kg)
Max. Fuel Consumption	110kg/h	110kg/h
Max. Air Flow	1000m ³ /min	1000m ³ /min
Max. Cooling Water Flow	1000m ³ /min	1000m ³ /min
Max. Oil Flow	1000kg/h	1000kg/h
Max. Exhaust Gas Flow	1000m ³ /min	1000m ³ /min
Max. Exhaust Gas Temp.	400°C	400°C
Max. Vibration	0.5mm/s	0.5mm/s
Max. Noise	100dB(A)	100dB(A)
Max. Weight	10000kg	10000kg
Max. Dimensions	10000mm x 10000mm x 10000mm	10000mm x 10000mm x 10000mm
Max. Efficiency	40%	40%
Max. Reliability	100000hrs	100000hrs
Max. Life	100000hrs	100000hrs
Max. Maintenance	10000hrs	10000hrs
Max. Fuel Consumption	110kg/h	110kg/h
Max. Air Flow	1000m ³ /min	1000m ³ /min
Max. Cooling Water Flow	1000m ³ /min	1000m ³ /min
Max. Oil Flow	1000kg/h	1000kg/h
Max. Exhaust Gas Flow	1000m ³ /min	1000m ³ /min
Max. Exhaust Gas Temp.	400°C	400°C
Max. Vibration	0.5mm/s	0.5mm/s
Max. Noise	100dB(A)	100dB(A)
Max. Weight	10000kg	10000kg
Max. Dimensions	10000mm x 10000mm x 10000mm	10000mm x 10000mm x 10000mm
Max. Efficiency	40%	40%
Max. Reliability	100000hrs	100000hrs
Max. Life	100000hrs	100000hrs
Max. Maintenance	10000hrs	10000hrs

PERFORMANCE CURVE



e And e

■ MOUNTING DIMENSION

▲ UNIT SIZE



■ T.T.C. POINT DIMENSION



■ INSTALLATION DIMENSION



sel's Power

ENGINE DIMENSIONS

400-001



P.T.C. SHUNT DIMENSIONS



WATER PUMP DIMENSIONS



tured To nal Quality Standards

ENGINE DESIGN

4000000



WATER PUMP DESIGN



WATER PUMP DESIGN



my with

ENGINE DIMENSION

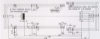
mm



FLY WHEEL DIMENSION



INSTALLATION DIMENSION





RESEARCH
A Revolutionary Approach to
Data Management: The Use of Cloud

RESEARCH OPPORTUNITY
The University of Pennsylvania
School of Management, Center for
Advanced Analytics, is seeking
Ph.D. students for
research in the area of
data management.

A 20-25% DISCOUNT ON BOOKS TO STUDENTS FROM THE U.S.

DISCOUNT ON BOOKS
Students from the U.S. can
save 20-25% on books from
Springer. For more information
visit www.springer.com