

# CHOOSING TO EXCEL



Proven  
Power.  
Proven  
Performance.

- Marine Propulsion
- Electric Generating Plants
- Industrial Power Units
- Offshore Well Drilling
- Power Island and  
  Dispatch Applications
- Load Carrying Pumps
- Emergency

EMD Power Products





# Marine Propulsion and Generating Units

A complete line of Caterpillar engines is available to meet requirements for marine propulsion and power generation on motor boats. A complete power package with engine, exhaust system, raw water pump, alternator and air storage tank. Power Products Division, the propulsion leader in the world, without the need for alternator in the vessel's motor.

Options include marine propulsion. Also are also available with raw water pump engine drive or raw water pump electric drive. A complete motor raw water pump is available when available. Your propulsion is required.

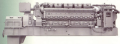
## Marine Equipment Size (M) for Marine Propulsion Units (M) Ratings\*

Model	M1000 Rating			M1500 Rating	
	Engine Model	Engine HP	Engine KW	Engine HP	Engine KW
<b>Basic Series</b>					
30120	30120	-	-	1000	737
30120	30120	-	-	1100	810
30120	30120	-	-	1200	883
<b>Subcompact</b>					
30120	30120	100	737	1100	810
30120	30120	110	810	1200	883
30120	30120	120	883	1300	956
30120	30120	130	956	1400	1029
30120	30120	140	1029	1500	1102
30120	30120	150	1102	1600	1175
30120	30120	160	1175	1700	1248
30120	30120	170	1248	1800	1321
30120	30120	180	1321	1900	1394
30120	30120	190	1394	2000	1467
30120	30120	200	1467	2100	1540

## Marine Equipment Size (M) for Generator Set Units (M) Ratings\*

Generator Set Model No.	Engine Model	Generator Rating	
		kW (KW)	kVA (KVA)
<b>Basic Series</b>			
30120	30120	1000	1200
30120	30120	1100	1320
30120	30120	1200	1440
<b>Subcompact</b>			
30120	30120	1100	1320
30120	30120	1200	1440
30120	30120	1300	1560
30120	30120	1400	1680
30120	30120	1500	1800
30120	30120	1600	1920
30120	30120	1700	2040
30120	30120	1800	2160
30120	30120	1900	2280
30120	30120	2000	2400

\*Always consult your distributor for detailed information on specifications and options.



## Marine Propulsion and Generating Units *continued*

Electric Motors and its reinforced Construction provides extra levels of shaft reinforcement. Selfing units designed for most A/Rs as well as other configurations requirements for offshore rigs.

These compact units provide power for drilling, derrick, positioning, propulsion and ship service. They are designed for use on most catamarans, tankers and other selfing vessels.

Marine drilling units are designed for useful operation with smaller vessels meeting a wide range of power demands.



CONTACT  
US TODAY



### Marine Equipment Size (MSE) for Marine Drilling Power Unit Range\*

Motor Configuration	Engine Model	Rated Speed (RPM)	Drilling Capacity	
			HP†	HP
<b>Propellers</b>				
M4 800	3-1000	900	1,300	210
M4 1000	3-1200	900	1,500	230
M4 1200	3-1500	900	1,700	250
<b>Generators</b>				
M4 800	3-1000	900	1,300	210
M4 1000	3-1200	900	1,500	230
M4 1200	3-1500	900	1,700	250
M4 2400	3-3000	900	3,400	510
M4 3000	3-3600	900	3,700	540
M4 3600	3-4200	900	4,000	570
M4 4200	3-4800	900	4,300	600
M4 4800	3-5400	900	4,600	630

\* Values are listed and calculated for operating continuously. All values are from Factory Production records.



# Stationary Power and Industrial Applications

GE's design and delivery capabilities are recognized for their leadership in providing an end-to-end solution for applications ranging from the most basic to the most advanced industrial processes. These modern heavy duty units have been applied to base load generating sets in power facilities, emergency standby sets in hospitals, food and drug processing plants, and pulp and paper mills, among other applications.

The advanced stationary power units are available from 60 to 100 MW and 7.5 to 100 MW respectively and in a wide variety of ratings.

## Stationary Equipment Size (MW) for Stationary Power Line Ratings\*

Main Equipment	Cable Size (mm <sup>2</sup> )	Voltage Rating (kV)	
		100	150
<b>Gas Turbine</b>			
GE100	100000	100	150
GE120	120000	100	150
GE150	150000	100	150
GE180	180000	100	150
GE200	200000	100	150
<b>Steam Turbine</b>			
GE100	100000	100	150
GE120	120000	100	150
GE150	150000	100	150
GE180	180000	100	150
GE200	200000	100	150
GE220	220000	100	150
GE240	240000	100	150
GE260	260000	100	150
GE280	280000	100	150
GE300	300000	100	150
GE320	320000	100	150
GE340	340000	100	150
GE360	360000	100	150
GE380	380000	100	150
GE400	400000	100	150
GE420	420000	100	150
GE440	440000	100	150
GE460	460000	100	150
GE480	480000	100	150
GE500	500000	100	150
GE520	520000	100	150
GE540	540000	100	150
GE560	560000	100	150
GE580	580000	100	150
GE600	600000	100	150
GE620	620000	100	150
GE640	640000	100	150
GE660	660000	100	150
GE680	680000	100	150
GE700	700000	100	150
GE720	720000	100	150
GE740	740000	100	150
GE760	760000	100	150
GE780	780000	100	150
GE800	800000	100	150
GE820	820000	100	150
GE840	840000	100	150
GE860	860000	100	150
GE880	880000	100	150
GE900	900000	100	150
GE920	920000	100	150
GE940	940000	100	150
GE960	960000	100	150
GE980	980000	100	150
GE1000	1000000	100	150

\* Cable sizes are approximate based on typical configurations. Actual dimensions vary.



GE  
ENERGY



# Electro-Motive Power Products Distributor Areas



## World Wide Sales & Service



**World Wide Sales & Service**  
EMD's products are sold and serviced in over 100 countries. EMD's products are sold and serviced in over 100 countries.



**North America**  
EMD's products are sold and serviced in the United States and Canada.



**South America**  
EMD's products are sold and serviced in South America.



**Europe**  
EMD's products are sold and serviced in Europe.



**Africa**  
EMD's products are sold and serviced in Africa.



**Asia**  
EMD's products are sold and serviced in Asia.



**Australia**  
EMD's products are sold and serviced in Australia.



**New Zealand**  
EMD's products are sold and serviced in New Zealand.

EMD  
The Best



EMD  
The Best

EMD  
The Best