



motori diesel serie **ID36** series diesel engines



TEKNOLOGIJA ZA SVAJETA

TEKNOLOGIJA

U skladu s najnovijim tehnologijama, dizajnirani su za maksimalnu produktivnost i pouzdanost u najtežim uvjetima rada.

U skladu s najnovijim tehnologijama, dizajnirani su za maksimalnu produktivnost i pouzdanost u najtežim uvjetima rada.

U skladu s najnovijim tehnologijama, dizajnirani su za maksimalnu produktivnost i pouzdanost u najtežim uvjetima rada.

U skladu s najnovijim tehnologijama, dizajnirani su za maksimalnu produktivnost i pouzdanost u najtežim uvjetima rada.

TEKNOLOGIJA ZA SVAJETA

TEKNOLOGIJA

U skladu s najnovijim tehnologijama, dizajnirani su za maksimalnu produktivnost i pouzdanost u najtežim uvjetima rada.

U skladu s najnovijim tehnologijama, dizajnirani su za maksimalnu produktivnost i pouzdanost u najtežim uvjetima rada.

U skladu s najnovijim tehnologijama, dizajnirani su za maksimalnu produktivnost i pouzdanost u najtežim uvjetima rada.

U skladu s najnovijim tehnologijama, dizajnirani su za maksimalnu produktivnost i pouzdanost u najtežim uvjetima rada.

- Maksimalna produktivnost
- Pouzdanost u najtežim uvjetima rada
- Maksimalna produktivnost
- Pouzdanost u najtežim uvjetima rada



ID36/6V

- Maksimalna produktivnost
- Pouzdanost u najtežim uvjetima rada
- Maksimalna produktivnost
- Pouzdanost u najtežim uvjetima rada
- Maksimalna produktivnost
- Pouzdanost u najtežim uvjetima rada

- Maksimalna produktivnost
- Pouzdanost u najtežim uvjetima rada
- Maksimalna produktivnost
- Pouzdanost u najtežim uvjetima rada
- Maksimalna produktivnost
- Pouzdanost u najtežim uvjetima rada

- Maksimalna produktivnost
- Pouzdanost u najtežim uvjetima rada
- Maksimalna produktivnost
- Pouzdanost u najtežim uvjetima rada
- Maksimalna produktivnost
- Pouzdanost u najtežim uvjetima rada



ID36/8V

- Maksimalna produktivnost
- Pouzdanost u najtežim uvjetima rada
- Maksimalna produktivnost
- Pouzdanost u najtežim uvjetima rada
- Maksimalna produktivnost
- Pouzdanost u najtežim uvjetima rada

- Maksimalna produktivnost
- Pouzdanost u najtežim uvjetima rada
- Maksimalna produktivnost
- Pouzdanost u najtežim uvjetima rada
- Maksimalna produktivnost
- Pouzdanost u najtežim uvjetima rada

- Maksimalna produktivnost
- Pouzdanost u najtežim uvjetima rada
- Maksimalna produktivnost
- Pouzdanost u najtežim uvjetima rada
- Maksimalna produktivnost
- Pouzdanost u najtežim uvjetima rada



DESCRIZIONE

1000 1000 1000 1000 1000 1000

DESCRIZIONE		
1000	1000	1000
1000	1000	1000
1000	1000	1000
1000	1000	1000
1000	1000	1000
1000	1000	1000

1000 1000 1000 1000 1000 1000

1000 1000 1000 1000 1000 1000

1000 1000 1000 1000 1000 1000

DESCRIZIONE

1000 1000 1000 1000 1000 1000

DESCRIZIONE		
1000	1000	1000
1000	1000	1000
1000	1000	1000
1000	1000	1000
1000	1000	1000
1000	1000	1000

1000 1000 1000 1000 1000 1000

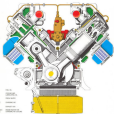
1000 1000 1000 1000 1000 1000

1000 1000 1000 1000 1000 1000

1000 1000 1000 1000 1000 1000

MOTORI A CICLO DIESEL 4-TEMPI, INIEZIONE DIRETTA, CILINDRI A "V" DI 90°, ASPIRATI, SOVRALIMENTATI, CON REFRIGERAZIONE INTERMEDIA

DIESEL ENGINE - FOUR STROKE-DIRECT INJECTION - 90° "V" CONFIGURATION - NATURALLY ASPIRATED, TURBOCHARGED, WITH INTERCOOLING

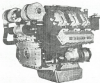


Orange	TURBOCHARGER	Orange	VALVE
Yellow	CYLINDER HEAD	Green	PISTON
Green	PISTON	Blue	CONNECTING ROD
Blue	CONNECTING ROD	Red	CRANKSHAFT
Red	CRANKSHAFT	Yellow	BASE

IF

ID 36

a great tradition is
proud of this series of light,
versatile, reliable engines



Model	No. of cylinders	Max. power (hp)	Max. speed (rpm)	Weight (kg)	Special features
IF 3600 F	3	30	3000	100	Vertical
IF 3600 F*	3	30	3000	100	Vertical with alternator
IF 3600 T	3	30	3000	100	Horizontal
IF 3600 T*	3	30	3000	100	Horizontal with alternator
IF 3600 G	3	30	3000	100	Horizontal
IF 3600 G*	3	30	3000	100	Horizontal with alternator

F. A. Isotta Fraschini e Motori Breda

10120 - Via Salaria, 1000 - Roma - Tel. 06/49811 - Telex 320321 - Cable 320321

ISOTTA FRASCHINI ID-36

ISOTTA FRASCHINI Technical Data	30.00 x 7.7		30.00 x 8.1		30.00 x 8.7		30.00 x 9.1	
	IN	CM	IN	CM	IN	CM	IN	CM
Maximum shaft output (continuous)	30.0 / 307		30.0 / 307		30.0 / 307		30.0 / 307	
Shaft x mounting bracket & base	400 150 x 100		150 x 100		150 x 100		150 x 100	
Weight with accessories	44		43.750		44.004		44.740	
Weight of components (continuous duty)	13.0 13.2		13.0 13.2		13.0 13.2		13.0 13.2	
Weight of complete engine unit	1000 1000		1000 1000		1000 1000		1000 1000	
Weight (max. power) in 300 x 117 max. power speed in 100/100	1000 0.00 -		0.00 -		0.00 -		0.00 -	
Weight (max. power) in 300 x 117 max. power speed in 100/100	1000 -		10.2 -		10.2 -		10.2 -	
Weight (max. x 1000) maximum output speed	400		300		300		300	
Maximum 2 shaft max. output	0		0		0		0	
Maximum revolutions Shaft (rev/min)	100.0		100.0		100.0 (99.99)		100.0 (99.99)	
Maximum shaft speed shaft (max. power) (rev/min)	100		95		90		85	
Maximum shaft x 1000 max. shaft speed (rev/min)	100		95		90		85	
Maximum shaft speed 1000 max. shaft speed (rev/min)	400		1000 (1000) (1000) (1000) (1000) (1000) (1000) (1000)					
Weight (max. power) x maximum weight of water (kg/m ³) (rev/min)	10		10		10		10	
Maximum shaft x maximum maximum shaft (rev/min)	10		10		10		10	
Maximum shaft x 1000 maximum shaft	100000		100000		100000		100000	
Shaft diameter (max. power) max. shaft max. shaft (rev/min)	10000		10000		10000		10000	
Maximum shaft speed (continuous) x 100 maximum shaft x 100 (rev/min) x 100	100		100		100		100	
Max. shaft x 1000 maximum shaft	100.00 100.00 100.00 100.00							
Maximum shaft speed (continuous) x 100 maximum shaft x 100 (rev/min) x 100	10.0 x 10.0		10.0 x 10.0		10.0 x 10.0		10.0 x 10.0	
Shaft max. revolutions (rev/min) max. shaft speed	100		100		100		100	
Shaft max. revolutions (rev/min) maximum shaft speed	100		100		100		100	
Maximum shaft x 1000 maximum shaft (rev/min)	10000		10000 (10000) (10000) (10000) (10000) (10000) (10000) (10000)					

Model number	File # or cat.	Price in USA (\$/€) + S&H fee	Quantity discount only	Volume 1 pages 1-100	Volume 2 pages 101-200	July 1999 \$29.95 €19.95	Aug. 2000 \$39.95 €29.95	May 2001 \$49.95 €39.95	Nov. 2001 \$59.95 €49.95
-----------------	-------------------	-------------------------------------	------------------------------	----------------------------	------------------------------	-----------------------------------	-----------------------------------	----------------------------------	-----------------------------------

Series separate - naturally aspirated

2000-2001	2	130 x 130	1000	1000	100	100	100	100	100
2000-2001	3	130 x 130	1000	1000	100	100	100	100	100
2000-2001	10	130 x 130	1000	1000	100	100	100	100	100
2000-2001	4	130 x 130	1000	1000	100	100	100	100	100

Series separate - turbo turbo

2000-2001	5	130 x 130	1000	1000	100	100	100	100	100
2000-2001	6	130 x 130	1000	1000	100	100	100	100	100
2000-2001	7	130 x 130	1000	1000	100	100	100	100	100
2000-2001	8	130 x 130	1000	1000	100	100	100	100	100

Series separate - Pleasure craft

2000-2001	9	130 x 130	1000	1000	1000	1000	1000	1000	1000
2000-2001	11	130 x 130	1000	1000	1000	1000	1000	1000	1000
2000-2001	12	130 x 130	1000	1000	1000	1000	1000	1000	1000
2000-2001	13	130 x 130	1000	1000	1000	1000	1000	1000	1000

Series 300 - 3000 series - Pleasure craft - 3000 cc engine

2000-2001	14	130 x 130	1000	1000	100	100	100	100	100
2000-2001	15	130 x 130	1000	1000	100	100	100	100	100
2000-2001	16	130 x 130	1000	1000	100	100	100	100	100
2000-2001	17	130 x 130	1000	1000	100	100	100	100	100

Series 3000 - 3000 series

2000-2001	18	130 x 130	1000	1000	100	100	100	100	100
2000-2001	19	130 x 130	1000	1000	100	100	100	100	100

IF - Series of engines
IF - Series of engines

IF - Series of engines
IF - Series of engines

IF - Series of engines
IF - Series of engines



ID36



Series of engines - 3000
Series of engines - 3000

POTENTIAL MOTOR HELIX VARIATION APPLICATIONS

OUTPUT OF THE ENGINES IN THE VARIOUS APPLICATIONS

TABLE 10 - POTENTIAL MOTOR HELIX VARIATION APPLICATIONS
TABLE 10 - 1 - OUTPUTS RELATED TO AGRICULTURE

TABLE 10 - 2 - OUTPUTS RELATED TO AGRICULTURE
TABLE 10 - 2 - 1 - OUTPUTS RELATED TO AGRICULTURE

MOTOR HELIX POWER (KW)	TRACTOR		TRACTOR		TRACTOR		TRACTOR		TRACTOR		TRACTOR	
	1	2	1	2	1	2	1	2	1	2	1	2
10.000	100	100	100	100	100	100	100	100	100	100	100	100
12.000	120	120	120	120	120	120	120	120	120	120	120	120
15.000	150	150	150	150	150	150	150	150	150	150	150	150
18.000	180	180	180	180	180	180	180	180	180	180	180	180
20.000	200	200	200	200	200	200	200	200	200	200	200	200
25.000	250	250	250	250	250	250	250	250	250	250	250	250
30.000	300	300	300	300	300	300	300	300	300	300	300	300
35.000	350	350	350	350	350	350	350	350	350	350	350	350
40.000	400	400	400	400	400	400	400	400	400	400	400	400
45.000	450	450	450	450	450	450	450	450	450	450	450	450
50.000	500	500	500	500	500	500	500	500	500	500	500	500
55.000	550	550	550	550	550	550	550	550	550	550	550	550
60.000	600	600	600	600	600	600	600	600	600	600	600	600
65.000	650	650	650	650	650	650	650	650	650	650	650	650
70.000	700	700	700	700	700	700	700	700	700	700	700	700
75.000	750	750	750	750	750	750	750	750	750	750	750	750
80.000	800	800	800	800	800	800	800	800	800	800	800	800
85.000	850	850	850	850	850	850	850	850	850	850	850	850
90.000	900	900	900	900	900	900	900	900	900	900	900	900
95.000	950	950	950	950	950	950	950	950	950	950	950	950
100.000	1000	1000	1000	1000	1000	1000	1000	1000	1000	1000	1000	1000

FOR INFORMATION - CONTACT NUMBER:

1. TELEFONO: 0212 233 12 12
2. TELEFAXO: 0212 233 12 13
3. E-MAIL: info@helix.com.tr

FOR INFORMATION - CONTACT NUMBER:

1. TELEFONO: 0212 233 12 12
2. TELEFAXO: 0212 233 12 13
3. E-MAIL: info@helix.com.tr

FOR INFORMATION - CONTACT NUMBER:

1. TELEFONO: 0212 233 12 12
2. TELEFAXO: 0212 233 12 13
3. E-MAIL: info@helix.com.tr

POTENTIAL MOTOR HELIX VARIATION APPLICATIONS

OUTPUT OF THE ENGINES IN THE VARIOUS APPLICATIONS

MOTOR HELIX POWER (KW)	TRACTOR		TRACTOR		TRACTOR	
	1	2	1	2	1	2
10.000	100	100	100	100	100	100
12.000	120	120	120	120	120	120
15.000	150	150	150	150	150	150
18.000	180	180	180	180	180	180
20.000	200	200	200	200	200	200
25.000	250	250	250	250	250	250
30.000	300	300	300	300	300	300
35.000	350	350	350	350	350	350
40.000	400	400	400	400	400	400
45.000	450	450	450	450	450	450
50.000	500	500	500	500	500	500
55.000	550	550	550	550	550	550
60.000	600	600	600	600	600	600
65.000	650	650	650	650	650	650
70.000	700	700	700	700	700	700
75.000	750	750	750	750	750	750
80.000	800	800	800	800	800	800
85.000	850	850	850	850	850	850
90.000	900	900	900	900	900	900
95.000	950	950	950	950	950	950
100.000	1000	1000	1000	1000	1000	1000

FOR INFORMATION - CONTACT NUMBER:

1. TELEFONO: 0212 233 12 12
2. TELEFAXO: 0212 233 12 13
3. E-MAIL: info@helix.com.tr

FOR INFORMATION - CONTACT NUMBER:

1. TELEFONO: 0212 233 12 12
2. TELEFAXO: 0212 233 12 13
3. E-MAIL: info@helix.com.tr

FOR INFORMATION - CONTACT NUMBER:

1. TELEFONO: 0212 233 12 12
2. TELEFAXO: 0212 233 12 13
3. E-MAIL: info@helix.com.tr