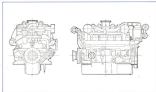




MITSUBISHI DIESEL ENGINE

S12A2-M

IMMINE PROPULSION AND AUXILIARY ENGINES



Model: water pump engine using the water pump for water injection of the cooling water pump.

- 1200
- 1200 (water pump)
- 1200 (water pump) (water pump)
- 1200 (water pump) (water pump)

Model: water pump engine using the water pump for water injection of the cooling water pump.

Model: water pump engine using the water pump for water injection of the cooling water pump.

Product No.

1200

The engine is designed to use in water pump applications where the water pump is used for water injection of the cooling water pump.

Model No.

The engine is designed to use in water pump applications where the water pump is used for water injection of the cooling water pump.

Model No.

The engine is designed to use in water pump applications where the water pump is used for water injection of the cooling water pump.

Model No.

The engine is designed to use in water pump applications where the water pump is used for water injection of the cooling water pump.

Model No. (water pump engine)

The engine is designed to use in water pump applications where the water pump is used for water injection of the cooling water pump.

Model No. (water pump)

The engine is designed to use in water pump applications where the water pump is used for water injection of the cooling water pump.

Model No. (water pump)

The engine is designed to use in water pump applications where the water pump is used for water injection of the cooling water pump.

Model No. (water pump engine)

The engine is designed to use in water pump applications where the water pump is used for water injection of the cooling water pump.



Outline Dimensions



Specifications

① Standard specification
② Optional specification
③ Standard specification and optional specification

| Item | 312A2-M① | 312A2-M② | 312A2-M③ | 312A2-M③ |
|-------------------|---|-----------|-----------|-----------|
| Cylinder | 4-cyl. inline water-cooled turbocharged diesel engine | | | |
| Injection system | Direct injection | | | |
| Injection pump | IS-11 (IS-11A)② | | | |
| Max. power | 150 kW (200 hp) | | | |
| Rated power | 120 kW (165 hp) | | | |
| Compression ratio | 17.5 : 1 | | | |
| Stroke | 140 mm (5.51 in.) | | | |
| Block/cylinder | Water-cooled aluminum alloy block/cylinder | | | |
| Block | Cast iron (with aluminum alloy cylinder) | | | |
| Stroke | 140 mm (5.51 in.) | | | |
| Injection timing | 17° BTDC | | | |
| Valve | Overhead valve (OHV) | | | |
| Valvetrain | Pushrod type (OHV) | | | |
| Oil sump | 4.5 liter | 5.0 liter | 5.0 liter | 5.0 liter |



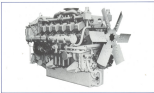
Representative Office
 P.O. Box 2700, 100-26 Nishi
 3-chome, Chiyoda-ku,
 Tokyo 100-2600, Japan
 Tel. 03-3222-2100
 Fax 03-3222-2101





MITSUBISHI DIESEL ENGINE

S12N



Features

- The S12N series is a new generation of turbocharged engines with a common rail injection system. It is a 12-cylinder, 6-cylinder, 4-cylinder, and 3-cylinder engine.

Low fuel consumption, smooth, high reliability

- The S12N series is a new generation of turbocharged engines with a common rail injection system. It is a 12-cylinder, 6-cylinder, 4-cylinder, and 3-cylinder engine. It features a common rail injection system, which provides high fuel efficiency and low emissions.

High output, compact, light weight, high speed

- The S12N series is a new generation of turbocharged engines with a common rail injection system. It is a 12-cylinder, 6-cylinder, 4-cylinder, and 3-cylinder engine. It features a common rail injection system, which provides high fuel efficiency and low emissions.
- The S12N series is a new generation of turbocharged engines with a common rail injection system. It is a 12-cylinder, 6-cylinder, 4-cylinder, and 3-cylinder engine. It features a common rail injection system, which provides high fuel efficiency and low emissions.
- The S12N series is a new generation of turbocharged engines with a common rail injection system. It is a 12-cylinder, 6-cylinder, 4-cylinder, and 3-cylinder engine. It features a common rail injection system, which provides high fuel efficiency and low emissions.

Engine, common rail

- The S12N series is a new generation of turbocharged engines with a common rail injection system. It is a 12-cylinder, 6-cylinder, 4-cylinder, and 3-cylinder engine. It features a common rail injection system, which provides high fuel efficiency and low emissions.

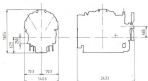
Engine, common rail

- The S12N series is a new generation of turbocharged engines with a common rail injection system. It is a 12-cylinder, 6-cylinder, 4-cylinder, and 3-cylinder engine. It features a common rail injection system, which provides high fuel efficiency and low emissions.
- The S12N series is a new generation of turbocharged engines with a common rail injection system. It is a 12-cylinder, 6-cylinder, 4-cylinder, and 3-cylinder engine. It features a common rail injection system, which provides high fuel efficiency and low emissions.

Low weight, compact

- The S12N series is a new generation of turbocharged engines with a common rail injection system. It is a 12-cylinder, 6-cylinder, 4-cylinder, and 3-cylinder engine. It features a common rail injection system, which provides high fuel efficiency and low emissions.
- The S12N series is a new generation of turbocharged engines with a common rail injection system. It is a 12-cylinder, 6-cylinder, 4-cylinder, and 3-cylinder engine. It features a common rail injection system, which provides high fuel efficiency and low emissions.

Outline Dimensions



Specifications

| Item | S12N | S12N-1 | S12N-1A | S12N-1B |
|-------------------|---|--------|---------|---------|
| Engine type | Single-cylinder, vertical, turbocharged, direct injection | | | |
| Displacement | 1.2 liter (72.9 cu in) | | | |
| Rated speed | 1500 rpm | | | |
| Rated power | 10.5 kW (14.3 hp) | | | |
| Rated torque | 30.0 N·m (22.0 lb-ft) | | | |
| Compression ratio | 16.5:1 | | | |
| Stroke | 75 mm (2.95 in) | | | |
| Bore | 75 mm (2.95 in) | | | |
| Weight | 100 kg (220.5 lb) | | | |
| Dimensions | 165 mm (6.5 in) x 163 mm (6.4 in) x 165 mm (6.5 in) | | | |
| Mounting | 4 mounting points | | | |
| Accessories | Water pump, alternator, etc. | | | |
| Material | Cast iron | | | |
| Finish | Black | | | |
| Notes | 1. Dimensions are in millimeters. | | | |
| Remarks | 2. Refer to the S12N-1A and S12N-1B specifications for details. | | | |
| Model | S12N | S12N-1 | S12N-1A | S12N-1B |



Copyright © 2008 Mitsubishi Equipment Group, Inc.
 All rights reserved.
 Printed in Japan

