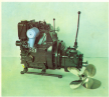


Puck - 16

DEEM-4:



Puck-16 provides off-road travel on a DEEM Diesel engine, which is the power source for the hydraulic steering system. A transmission system, type 16, is fixed to the forward housing. Electrical equipment is for 12 V. The engine is equipped with a catalytic converter for meeting air quality standards. Approximate weight is 4000 kg. Overall dimensions: length 1.8 m.

www.deem.com



DEEM (DEEM) CORPORATION
P.O. BOX 10000
10000 DE, 97100-0000
Portland
Telephone: 503-251-1111
Fax: 503-251-1112

Part 10 cast in grey iron in a position for all kinds of small water work, including fitting work.

TECHNICAL DATA:

Free weight	10.400 (24 lbs)
Free resistance	1000 (2200 lbs)
Free lift	100 (2200 ft)
Free speed	100 (2200 ft)
Free capacity	100 (2200 ft)
Free pressure	100 (2200 ft)
Free temperature	100 (2200 ft)
Free volume	100 (2200 ft)
Free area	100 (2200 ft)
Free length	100 (2200 ft)
Free width	100 (2200 ft)
Free height	100 (2200 ft)





PUCK - 38

PUCKIE ENKLADY MECHANIKIENE

Spółka z o.o.

ul. 18 Lutego 10a, 84-100 PUCK

tel. 79 08 81 14 80001, fax 79 08 81

POLAND



PUCK - 38

The PUCK - 38 power unit is designed for drive fishing boats and sail boats.

Propelling unit PUCK - 38 consists of the engine Linde-3000 (Pielons source) and the reversible reduction gear 58:1 produced by PZM-Puck.

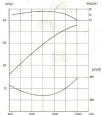
The gear is flange connected with the engine flywheel casing.

The unit is equipped with complete fuel, lubricating, cooling and electrical installations and is adapted for remote control type satellite Morse.

POWER UNIT PUCK - 38

Technical Data

Rating of power unit	--	20kW/28hp
engine speed	--	2800 rpm
Type of engine	--	2000cm ³ Perkins Diesel
Type of transmission	--	SP-50
Transmission ratio	--	20:1 to 22:1
Weight of power unit	--	420kg
Electric system	--	24 V
Control system	--	Full-load with cooling
Excitation system	--	pressure lubrication
Starting system	--	electrical



PUCK - 60

DESIGN

The PUCK - 60 power unit consists of a four-stroke, four cylinder diesel (40-200) type of motorized generator set fitted to the Dynalene mounting structure. The unit is equipped with water-cooled exhaust manifold, water and oil filters, external cycle cooling pump, engine speed and water

pressure controls, interconnection and control panels and a power take-off unit which feeds a engine frame.

The interconnecting gear is a single stage unit with intermediate rollers.

The rollers are hydraulically operated.

The transmission gear take off shaft is geared below the drive shaft. The transmission is coupled with the engine by means of a rubber coupling flexible coupling which in the past, has compensated the load changes of the engine and transmission shafts.

The cooling system has two pumps, an internal and an external one. Its cooling medium is sea water.

Water flow in the external cycle is controlled by a water pump driven from the engine through gear box.

The power unit is equipped with engine and transmission control gear fitted in a special panel which is constructed at the ship's structure.



MANUFACTURED BY
DYNALENE COMPANY
DYNALENE LTD
20, 2000 Avenue - Point
Lac Beauport - P.O. Box
100 - P.O. 1000 - Montreal



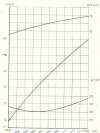
MANUFACTURED BY
DYNALENE COMPANY
DYNALENE LTD
20, 2000 Avenue - Point
Lac Beauport - P.O. Box
100 - P.O. 1000 - Montreal

The M200 - 400 power unit is designed to drive the spring inserts and interlocks for lifts.
 It meets the criteria established with the application of FEM classification safety.

TECHNICAL DATA

Rating of power unit
 Type of motor
 Type of transmission
 Transmission ratio
 Weight of power unit
 Control system
 Lubrication system
 Lubrication capacity
 Working system
 Output speed

- 400 kg (2000 N)
- 2000 W
- 100:1
- 1:1 (input: 1)
- 1000 kg
- 200 W
- Oil type water cooling
- automatic lubrication
- automatic
- 2000 rpm





Puck - 95

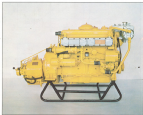
PLUCK ZAGŁADY MECHANICZNE

Opłata s.n.a.

ul. 10 Lutego 23a, 84-100 PUCK

NIP 79-09-01, KRS 004811, REG. TS-09-02

POLAND



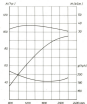
PUCK - 95 - 9500

The PZM-95 power units designed for drives - going vessels and inland navigation ships. The power unit consists of a 4 - the four stroke six-cylinder diesel 500-400 and synchronous reversing gear which is large - mounted to typical housing.

POWER UNIT PUCK - 95 - REKIN

TECHNICAL DATA

Weight of power unit	--	16.00 (350kg)
Engine speed	--	2000 rpm
Type of engine	--	6000cc
Type of transmission	--	20-22
Transmission ratio	--	1.1 to 1:1
Weight of power unit	--	160kg
Electric system	--	24 V
Cooling system	--	Self-cooled-water cooling
Exhaustion system	--	pressure exhaustion
Starting system	--	electric





Puck - 165

PROCESOR ENERGETYCZNY MECHANICZNY

Spółka z o.o.

ul. 18 Lutego 22a, 84-100 PUCK

tel. 79-20-81, tel. 85-6611, fax 79-20-82

POLAND



PUCK - 165 - DELFIN2

The PUCK - 165 power unit is designed to drive sea-going vessels and inland navigation ships.

This power unit consists of an in-line, four-stroke, six-cylinder diesel (70-50) and a reduction gearbox which is large mounted to the flywheel housing.

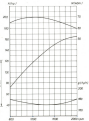
POWER UNIT PUCK - 185 - DELFIN 2

Technical Data

Weight of power unit
 Weight power
 Size of motor
 Type of transmission
 Transmission ratio
 Weight of power unit
 Weight power
 Control system
 Working system

.....

Motor (kW)
 Motor type
 Motor speed (rpm)
 Motor torque (Nm)
 Motor efficiency
 Motor power factor
 Motor protection
 Motor cooling





Puck - 200

PUCKE SĄSIĄGAMY MECHANICZNE

Spółka z o.o.

ul. 18 Lutego 21a, 54-100 PUCK

tel. 73 22 81 11, fax 73 22 11 11, fax 73 22 11 11

POLAND



PUCK - 200 - D5LFA 21T

The PUCK - 200 power units designed for ship use - going vessels and inland navigation ships.

The power unit consists of an in-line, four-stroke, six-cylinder supercharged diesel 50% BMEP and a reduction gearbox which is large - mounted to the flywheel-casing.

POWER UNIT PUCK - 200 - DELFIN 2T

TECHNICAL DATA

Rating of power unit	---	3000/10000/1
Engine speed	---	2000 rpm
Size of engine	---	3000 cc (approx)
Size of transmission	---	20-100
Transmission ratio	---	2.1 : 1 : 1
Weight of power unit	---	1.0 kg
Electric system	---	24V
Working system	---	Self-acting under-actuating
Controlled system	---	Pressure transmitter
Working system	---	Electric

