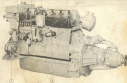


MD 50A, TMD 50A



1. Warner master gear
2. Propeller shaft
3. Crankshaft
4. Cylinder block
5. Oilpan

Fig. 1. Cutaway, MD 50A engine with Warner master gear.



1. Propeller shaft
2. Warner master gear
3. Crankshaft
4. Cylinder block
5. Oilpan

Fig. 2. Cutaway view, TMD 50A with Warner master gear.

Technical data

Engine

Configuration

Number of cylinders

Size

Power

Deployment

ROBIA, TROBIA

4

6,17 cm (2,43")

130 kW (177 CV)

5,75 mm (0,226 in)

NEOIA, TROBIA

4

6,17 cm (2,43")

130 kW (177 CV)

6,75 mm (0,265 in)

Max. engine output (kW/hp)

1000 rpm - 100%

1200 rpm

1500 rpm

ROBIA-10 | TROBIA-110

ROBIA-12 | TROBIA-112

ROBIA-15 | TROBIA-115

—

NEOIA-117

NEOIA-118

Output Power (kW)

1000 rpm (100% / 1000 W)

1200 rpm (100%)

1500 rpm (100%)

1800 rpm (100%)

Max. engine speed (rpm)

1000 rpm

ROBIA 10-110

1000/1100

TROBIA 10/110

1000/1100

TROBIA - 117/118/119/120

TROBIA - 112/113/114/115

TROBIA - 110/111/116/118

TROBIA - 115/116/117/119

NEOIA 117/118

1000/1100

Typical engine load

1000 rpm (100%)

1200 rpm (100%)

1500 rpm (100%)

1800 rpm (100%)

—

—

—

—

TROBIA 10/110/112

100-1000

100-1100

100-1100

100-1100

Operating speed (rpm) - speed (km/h)

ROBIA - 1000/110 - 100

ROBIA - 1200/110 - 100

ROBIA - 1500/110 - 100

TROBIA - 1000/110 - 100

TROBIA - 1200/110 - 100

100-110

NEOIA - 1000/110

NEOIA - 1200/110

NEOIA - 1500/110

TROBIA - 1000/110

—

NEOIA - 100-110

TROBIA - 100-110

Intelligent, s.p.a.

Download all engine specs

Page 10/10