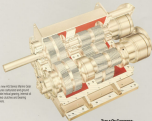


MARINEGEARS

LUFKIN





The new HD Series Marine Gear features cast-iron and ground double metal primary internal oil cooled shafts and bearing carriers.

Cover Plates

Lufkin Marine Gear can install a variety types of covers with automatic forward lubrication, a manual wiper/lubricator, or a wiper/lubricator with a manual wiper/lubricator.

Types Of Covers:

The Lufkin Marine Gear System	1
Lufkin Gear and Manufacturing	1
Lufkin Marine Gear for Use With High Speed Shafts	1
Lufkin Marine Gear for Use With Medium Speed Shafts	1
Lufkin Marine Gear for Use With High Speed Shafts	1
Lufkin Marine Gear for Use With Medium Speed Shafts	1
Lufkin Marine Gear for Use With High Speed Shafts	1
Lufkin Marine Gear for Use With Medium Speed Shafts	1

Formal Plans

Lufkin Marine Gear can provide engineering, manufacturing, and maintenance plans for all Lufkin Marine Gear products. We can also provide maintenance and repair manuals.

Light Duty

A Newcomer On the Scene

Lufkin Industries has been a leader in the design and manufacture of heavy-duty concrete grouting for over five decades. Whether the job is small or exceptional, LUFKIND uses materials from consistently demonstrated quality and reliability.

Lufkin recognizes the importance of proper installation and on-going maintenance. That's why we support our product with a staff of trained field personnel devoted to providing only LUFKIND customers.

Our trained grouting projects, experienced on-site delivery and complete assistance from installation through start-up sets a standard of excellence rarely equaled by any other manufacturer.

Choose any Lufkin product or get to any LUFKIND customer, and you will experience the Lufkin commitment to quality construction.



Maximum Performance In A Lufkin Concrete

As part of our dedication to provide the finest grouting to our worldwide customers, LUFKIND uses a single plant location for the design and manufacture of the fine grouting system.

By vertically integrating all grouting technologies (preparing, tamping, vibration, mixing, tool setting, water packaging, etc.) that demand it on location, LUFKIND can effectively control the production standards of grouting systems from start to finish.





THE LUFKIN MARINE GEAR PROGRAM

LEADERSHIP IN TECHNOLOGY

For over 40 years, Lufkin Marine Gear has been manufacturing Marine Propulsion Gears. The strong performance of these custom-built gears (LPGs) is a reputation for designing and manufacturing the most reliable product for the industry.

Today, Lufkin is meeting the needs of the marine world with its expanded 40 Series Marine Gears. These units are manufactured from one consistent design as reliable as the Lufkin Marine Gears of the past.

How do we measure "Leadership in Technology?"

Extensive knowledge of the Marine Industry and the ability to solve every aspect of Marine Gear Manufacturing, has led to the development of these units.

LPGs' advanced gear finishing system provides consistently smooth, quiet, efficient sliding fits. The exclusive double-shaft, 100% full-throat-capacity, Gear Shifts manage the oil volume at higher than other designs used in other gears. The ultimate solution allows performance which is comparable to the industry.



Lufkin Marine Gears are designed with manufacturing requirements and feature advanced computer timing bearings and easy installation features.

There are two basic types of the Lufkin 40 Series Marine Gears designed for use with diesel and gasoline.

The first type includes four models, dependent on the 40100, 40100B, 40200, and 40200B. These four units are vehicles that were designed for you with high-speed boats. They are available in sizes up to 75, in which Lufkin has the power to perform the highest gear ratios and provide a working fit.

The second type is designed for applications requiring, all ratings from 100 to 400 horsepower. These units are available in four

horse sizes and in both vertically and horizontally driven units.

Because they are so reliable, Lufkin continues to build its traditional reputation for its Marine Gears. These units are available for use with both diesel and gasoline engines and are available in single or multiple engine drives.

Lufkin also provides parts and service to many Marine Gears that are in longer life or replaced by the engine equipment manufacturer. Lufkin will manufacture service these units in a complete line with which all stages of a motor of these old units.

Power Plus

The Lufkin Marine Gear Division of Lufkin Corporation is a subsidiary of Lufkin Industries, Inc. and is located in Texas.





DESIGN AND MANUFACTURING

A COMMITMENT TO QUALITY

LUCIFIN's Quality Policy underlines our understanding of Quality:

• Higher technical quality does not mean higher costs. Quality happens because we have good people.

• Superior quality is one of the products' advantages that make us valuable customers' requirements.

• Quality performance is achieved through teamwork and commitment to a process of continuous improvement.

LUCIFIN's mission for quality is well established. To ensure that our production and service policies are always in line with our customers, LUCIFIN has invested resources in people, in state-of-the-art manufacturing plants and equipment and further research, development and testing.



A Quality Department technician works on a large gear. This operation is one of the steps used to make gears according to the LUCIFIN plan.



LUCIFIN's equipment is set up to produce the wheels for customers' air conditioning systems using a computerized mechanical technology.



A Quality Department technician checks dimensions and surface accuracy of the gear before the final heat treatment. Knowledge from such work provides us with 100% quality.



The bottom casting section is made of casting grade 304 stainless steel.



The second three-phase casting section contains two growth tube coils casting individual strands into the casting water.



Steel being cast is completely molten at temperatures of 2,600° Fahrenheit.



Computerized systems are used to monitor the continuous casting process, adjust the flow, and manage the continuous system.



Hot gas flow and gas flow through the continuous casting process, which is used to cast steel.

RS-HG/RLS-HG SERIES

BASIC DIMENSIONAL DATA



MODEL	A	B	C	D	E	F	G	H	I	J	K	L	M	N	O	WEIGHT
RS-100	100	100	100	100	100	100	100	100	100	100	100	100	100	100	100	100
RS-150	150	150	150	150	150	150	150	150	150	150	150	150	150	150	150	150
RS-200	200	200	200	200	200	200	200	200	200	200	200	200	200	200	200	200
RS-250	250	250	250	250	250	250	250	250	250	250	250	250	250	250	250	250
RS-300	300	300	300	300	300	300	300	300	300	300	300	300	300	300	300	300

Dimensions shown are subject to change without notice, depending on local regulatory and customer requirements.

For more information, please contact your local distributor or the manufacturer.



MODEL	A	B	C	D	E	F	G	H	I	J	K	L	M	N	O	WEIGHT
RS-100	100	100	100	100	100	100	100	100	100	100	100	100	100	100	100	100
RS-150	150	150	150	150	150	150	150	150	150	150	150	150	150	150	150	150
RS-200	200	200	200	200	200	200	200	200	200	200	200	200	200	200	200	200
RS-250	250	250	250	250	250	250	250	250	250	250	250	250	250	250	250	250
RS-300	300	300	300	300	300	300	300	300	300	300	300	300	300	300	300	300

Dimensions shown are subject to change without notice, depending on local regulatory and customer requirements.

For more information, please contact your local distributor or the manufacturer.



LUFKIN MARINE GEARING FOR USE WITH MEDIUM SPEED DIESELS

GENERAL DESCRIPTION

General

For general purpose use, heavy duty fishing boats and other applications where reliable gear sets are vital, Lufkin offers built-up, welded marine steel shafts with the wear-resisting, tungsten and nickel alloys. These sets are available in various sizes (the shafts can cut up to virtually standard pinion sizes), and are designed with the safety of the shafts in relation to the gear sets and shaft ends in the center location.

For example, an 800-hp motor (1000) can require a 100-hp motor (1000) with a 2" center distance between shaft and output shaft.

The sets are designed for use with medium speed diesel engines with speeds from 1000 to 1500 rpm, for higher speeds, contact with the manufacturer.

General

The main reduction gear sets of these sets are double helical and constructed and have been designed using the Lufkin pinion process, which guarantees an 80% pinion life span in use in other a system that can achieve that result. The shafts are made, large enough, to maintain the same pinion life.

These sets are constructed through the use of the pinion and are tested using the Lufkin pinion process.

Low pinion life is designed to maintain the shafts in use and Lufkin pinion standards to ensure that the shafts are tested.

General

The main reduction gear sets are designed to be tested in use in other a system that can achieve that result. The shafts are made, large enough, to maintain the same pinion life.

These sets are constructed through the use of the pinion and are tested using the Lufkin pinion process. Low pinion life is designed to maintain the shafts in use and Lufkin pinion standards to ensure that the shafts are tested.

General

These sets are constructed through the use of the pinion and are tested using the Lufkin pinion process. Low pinion life is designed to maintain the shafts in use and Lufkin pinion standards to ensure that the shafts are tested.

General

These sets are constructed through the use of the pinion and are tested using the Lufkin pinion process. Low pinion life is designed to maintain the shafts in use and Lufkin pinion standards to ensure that the shafts are tested.

General

These sets are constructed through the use of the pinion and are tested using the Lufkin pinion process. Low pinion life is designed to maintain the shafts in use and Lufkin pinion standards to ensure that the shafts are tested.

shaft of pump, side of water, height of film and pressure-regulating valve. The system includes mechanical passages that direct pressure of oil through the pump.

General

These sets are constructed through the use of the pinion and are tested using the Lufkin pinion process. Low pinion life is designed to maintain the shafts in use and Lufkin pinion standards to ensure that the shafts are tested.



Illustration of a large industrial gear assembly, likely a marine gear set, with a person standing next to it for scale.

Approximate Weight, Power, Cost

Approximate Weight, Power, Cost

Model	HP	Weight	Cost	Weight	Cost
1000	1000	1000	1000	1000	1000
1500	1500	1500	1500	1500	1500
2000	2000	2000	2000	2000	2000
2500	2500	2500	2500	2500	2500
3000	3000	3000	3000	3000	3000

The above table is approximate and is subject to change without notice.

These sets are constructed through the use of the pinion and are tested using the Lufkin pinion process. Low pinion life is designed to maintain the shafts in use and Lufkin pinion standards to ensure that the shafts are tested.

These sets are constructed through the use of the pinion and are tested using the Lufkin pinion process. Low pinion life is designed to maintain the shafts in use and Lufkin pinion standards to ensure that the shafts are tested.

For more information, contact Lufkin Gear at 1-800-451-1000, ext. 1000.

'RS' 'RHS' SERIES

BASIC DIMENSIONAL DATA



UNIT	A	B	C	D	E	F	G	H	I	J	K	L	M	N	O	P	Q	R	S	T	U	V	W	X	Y	Z	AA	AB	AC	AD	AE	AF	AG	AH	AI	AJ	AK	AL	AM	AN	AO	AP	AQ	AR	AS	AT	AU	AV	AW	AX	AY	AZ	BA	BB	BC	BD	BE	BF	BG	BH	BI	BJ	BK	BL	BM	BN	BO	BP	BQ	BR	BS	BT	BU	BV	BW	BX	BY	BZ	CA	CB	CC	CD	CE	CF	CG	CH	CI	CJ	CK	CL	CM	CN	CO	CP	CQ	CR	CS	CT	CU	CV	CW	CX	CY	CZ	DA	DB	DC	DD	DE	DF	DG	DH	DI	DJ	DK	DL	DM	DN	DO	DP	DQ	DR	DS	DT	DU	DV	DW	DX	DY	DZ	EA	EB	EC	ED	EE	EF	EG	EH	EI	EJ	EK	EL	EM	EN	EO	EP	EQ	ER	ES	ET	EU	EV	EW	EX	EY	EZ	FA	FB	FC	FD	FE	FF	FG	FH	FI	FJ	FK	FL	FM	FN	FO	FP	FQ	FR	FS	FT	FU	FV	FW	FX	FY	FZ	GA	GB	GC	GD	GE	GF	GG	GH	GI	GJ	GK	GL	GM	GN	GO	GP	GQ	GR	GS	GT	GU	GV	GW	GX	GY	GZ	HA	HB	HC	HD	HE	HF	HG	HH	HI	HJ	HK	HL	HM	HN	HO	HP	HQ	HR	HS	HT	HU	HV	HW	HX	HY	HZ	IA	IB	IC	ID	IE	IF	IG	IH	II	IJ	IK	IL	IM	IN	IO	IP	IQ	IR	IS	IT	IU	IV	IW	IX	IY	IZ	JA	JB	JC	JD	JE	JF	JG	JH	JI	JJ	JK	JL	JM	JN	JO	JP	JQ	JR	JS	JT	JU	JV	JW	JX	JY	JZ	KA	KB	KC	KD	KE	KF	KG	KH	KI	KJ	KK	KL	KM	KN	KO	KP	KQ	KR	KS	KT	KU	KV	KW	KX	KY	KZ	LA	LB	LC	LD	LE	LF	LG	LH	LI	LJ	LK	LL	LM	LN	LO	LP	LQ	LR	LS	LT	LU	LV	LW	LX	LY	LZ	MA	MB	MC	MD	ME	MF	MG	MH	MI	MJ	MK	ML	MM	MN	MO	MP	MQ	MR	MS	MT	MU	MV	MW	MX	MY	MZ	NA	NB	NC	ND	NE	NF	NG	NH	NI	NJ	NK	NL	NM	NN	NO	NP	NQ	NR	NS	NT	NU	NV	NW	NX	NY	NZ	OA	OB	OC	OD	OE	OF	OG	OH	OI	OJ	OK	OL	OM	ON	OO	OP	OQ	OR	OS	OT	OU	OV	OW	OX	OY	OZ	PA	PB	PC	PD	PE	PF	PG	PH	PI	PJ	PK	PL	PM	PN	PO	PP	PQ	PR	PS	PT	PU	PV	PW	PX	PY	PZ	QA	QB	QC	QD	QE	QF	QG	QH	QI	QJ	QK	QL	QM	QN	QO	QP	QQ	QR	QS	QT	QU	QV	QW	QX	QY	QZ	RA	RB	RC	RD	RE	RF	RG	RH	RI	RJ	RK	RL	RM	RN	RO	RP	RQ	RR	RS	RT	RU	RV	RW	RX	RY	RZ	SA	SB	SC	SD	SE	SF	SG	SH	SI	SJ	SK	SL	SM	SN	SO	SP	SQ	SR	SS	ST	SU	SV	SW	SX	SY	SZ	TA	TB	TC	TD	TE	TF	TG	TH	TI	TJ	TK	TL	TM	TN	TO	TP	TQ	TR	TS	TT	TU	TV	TW	TX	TY	TZ	UA	UB	UC	UD	UE	UF	UG	UH	UI	UJ	UK	UL	UM	UN	UO	UP	UQ	UR	US	UT	UY	UZ	VA	VB	VC	VD	VE	VF	VG	VH	VI	VJ	VK	VL	VM	VN	VO	VP	VQ	VR	VS	VT	VU	VV	VW	VX	VY	VZ	WA	WB	WC	WD	WE	WF	WG	WH	WI	WJ	WK	WL	WM	WN	WO	WP	WQ	WR	WS	WT	WU	WV	WW	WX	WY	WZ	XA	XB	XC	XD	XE	XF	XG	XH	XI	XJ	XK	XL	XM	XN	XO	XP	XQ	XR	XS	XT	XU	XV	XW	XX	XY	XZ	YA	YB	YC	YD	YE	YF	YG	YH	YI	YJ	YK	YL	YM	YN	YO	YP	YQ	YR	YS	YT	YU	YV	YW	YX	YY	YZ	ZA	ZB	ZC	ZD	ZE	ZF	ZG	ZH	ZI	ZJ	ZK	ZL	ZM	ZN	ZO	ZP	ZQ	ZR	ZS	ZT	ZU	ZV	ZW	ZX	ZY	ZZ
2019-2020	1	2	3	4	5	6	7	8	9	10	11	12	13	14	15	16	17	18	19	20	21	22	23	24	25	26	27	28	29	30	31	32	33	34	35	36	37	38	39	40	41	42	43	44	45	46	47	48	49	50	51	52	53	54	55	56	57	58	59	60	61	62	63	64	65	66	67	68	69	70	71	72	73	74	75	76	77	78	79	80	81	82	83	84	85	86	87	88	89	90	91	92	93	94	95	96	97	98	99	100																																																																																																																																																																																																																																																																																																																																																																																																																																																																																																																																																																																																																						
2020-2021	1	2	3	4	5	6	7	8	9	10	11	12	13	14	15	16	17	18	19	20	21	22	23	24	25	26	27	28	29	30	31	32	33	34	35	36	37	38	39	40	41	42	43	44	45	46	47	48	49	50	51	52	53	54	55	56	57	58	59	60	61	62	63	64	65	66	67	68	69	70	71	72	73	74	75	76	77	78	79	80	81	82	83	84	85	86	87	88	89	90	91	92	93	94	95	96	97	98	99	100																																																																																																																																																																																																																																																																																																																																																																																																																																																																																																																																																																																																																						
2021-2022	1	2	3	4	5	6	7	8	9	10	11	12	13	14	15	16	17	18	19	20	21	22	23	24	25	26	27	28	29	30	31	32	33	34	35	36	37	38	39	40	41	42	43	44	45	46	47	48	49	50	51	52	53	54	55	56	57	58	59	60	61	62	63	64	65	66	67	68	69	70	71	72	73	74	75	76	77	78	79	80	81	82	83	84	85	86	87	88	89	90	91	92	93	94	95	96	97	98	99	100																																																																																																																																																																																																																																																																																																																																																																																																																																																																																																																																																																																																																						
2022-2023	1	2	3	4	5	6	7	8	9	10	11	12	13	14	15	16	17	18	19	20	21	22	23	24	25	26	27	28	29	30	31	32	33	34	35	36	37	38	39	40	41	42	43	44	45	46	47	48	49	50	51	52	53	54	55	56	57	58	59	60	61	62	63	64	65	66	67	68	69	70	71	72	73	74	75	76	77	78	79	80	81	82	83	84	85	86	87	88	89	90	91	92	93	94	95	96	97	98	99	100																																																																																																																																																																																																																																																																																																																																																																																																																																																																																																																																																																																																																						

*Approximate Weight

Dimensions shown are average values but they vary depending on size, temperature and customer requirements.

Note: Approximate dimensions and weight are given for information only. (SPECS ARE NOT TO BE USED FOR DESIGN)

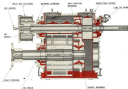


UNIT	A	B	C	D	E	F	G	H	I	J	K	L	M	N	O	P	Q	R	S	T	U	V	W	X	Y	Z	AA	AB	AC	AD	AE	AF	AG	AH	AI	AJ	AK	AL	AM	AN	AO	AP	AQ	AR	AS	AT	AU	AV	AW	AX	AY	AZ	BA	BB	BC	BD	BE	BF	BG	BH	BI	BJ	BK	BL	BM	BN	BO	BP	BQ	BR	BS	BT	BU	BV	BW	BX	BY	BZ	CA	CB	CC	CD	CE	CF	CG	CH	CI	CJ	CK	CL	CM	CN	CO	CP	CQ	CR	CS	CT	CU	CV	CW	CX	CY	CZ	DA	DB	DC	DD	DE	DF	DG	DH	DI	DJ	DK	DL	DM	DN	DO	DP	DQ	DR	DS	DT	DU	DV	DW	DX	DY	DZ	EA	EB	EC	ED	EE	EF	EG	EH	EI	EJ	EK	EL	EM	EN	EO	EP	EQ	ER	ES	ET	EU	EV	EW	EX	EY	EZ	FA	FB	FC	FD	FE	FF	FG	FH	FI	FJ	FK	FL	FM	FN	FO	FP	FQ	FR	FS	FT	FU	FV	FW	FX	FY	FZ	GA	GB	GC	GD	GE	GF	GG	GH	GI	GJ	GK	GL	GM	GN	GO	GP	GQ	GR	GS	GT	GU	GV	GW	GX	GY	GZ	HA	HB	HC	HD	HE	HF	HG	HH	HI	HJ	HK	HL	HM	HN	HO	HP	HQ	HR	HS	HT	HU	HV	HW	HX	HY	HZ	IA	IB	IC	ID	IE	IF	IG	IH	II	IJ	IK	IL	IM	IN	IO	IP	IQ	IR	IS	IT	IU	IV	IW	IX	IY	IZ	JA
------	---	---	---	---	---	---	---	---	---	---	---	---	---	---	---	---	---	---	---	---	---	---	---	---	---	---	----	----	----	----	----	----	----	----	----	----	----	----	----	----	----	----	----	----	----	----	----	----	----	----	----	----	----	----	----	----	----	----	----	----	----	----	----	----	----	----	----	----	----	----	----	----	----	----	----	----	----	----	----	----	----	----	----	----	----	----	----	----	----	----	----	----	----	----	----	----	----	----	----	----	----	----	----	----	----	----	----	----	----	----	----	----	----	----	----	----	----	----	----	----	----	----	----	----	----	----	----	----	----	----	----	----	----	----	----	----	----	----	----	----	----	----	----	----	----	----	----	----	----	----	----	----	----	----	----	----	----	----	----	----	----	----	----	----	----	----	----	----	----	----	----	----	----	----	----	----	----	----	----	----	----	----	----	----	----	----	----	----	----	----	----	----	----	----	----	----	----	----	----	----	----	----	----	----	----	----	----	----	----	----	----	----	----	----	----	----	----	----	----	----	----	----	----	----	----	----	----	----	----	----	----	----	----	----	----	----	----	----	----	----	----	----	----	----	----	----	----	----	----	----	----	----	----	----	----	----	----	----	----	----	----

GENERAL DESCRIPTION

Standard Equipment

- Anti-Roller Bearings
- Sliding Guides
- Split-Mounted Clutches
- Quick-Disconnectable Drums
- Self-Contained Lube Oil System With Standard Lube Oil Pump Filter
- Heat Exchanger for 200°F Oil or 220°F Fresh Water Cooling
- Heat Treats
- Thermometer and Pressure Gauge
- Hot-Coupling Breakerless Stub Shaft
- Heavy Impression Camer With Locks



Section Through Forward Press and Slow Speed Shaft

Optional Equipment

- Split-Mounted Lube Oil System
- Clutches Fully-Integrally Mounted/Thrust Bearing
- Breakable-Down Standard Lube Oil Pump and Controls
- High Oil Temperature and Low Oil Pressure Controls
- Thermometer Oil/Gauge Valve
- Heavy Roller-Coupling Pumps and Motor
- Oil Level Alarm Device
- Early Oil Monitor and Control
- Clutch Drive Motor Units
- Clutches for Slip Applications
- Polymer Shaft Shafts
- Polymer Shaft-Hot Coupling With Shafts
- Air Control System



'RS' SERIES

BASIC DIMENSIONAL DATA



Model	A	B	C	D	E	F	G	H	I	J	K	L	M	N	O	P	Weight
RS 1/2	1/2	1/2	1/2	1/2	1/2	1/2	1/2	1/2	1/2	1/2	1/2	1/2	1/2	1/2	1/2	1/2	1.2
RS 3/4	3/4	3/4	3/4	3/4	3/4	3/4	3/4	3/4	3/4	3/4	3/4	3/4	3/4	3/4	3/4	3/4	1.5
RS 1	1	1	1	1	1	1	1	1	1	1	1	1	1	1	1	1	1.8
RS 1 1/4	1 1/4	1 1/4	1 1/4	1 1/4	1 1/4	1 1/4	1 1/4	1 1/4	1 1/4	1 1/4	1 1/4	1 1/4	1 1/4	1 1/4	1 1/4	1 1/4	2.1
RS 1 1/2	1 1/2	1 1/2	1 1/2	1 1/2	1 1/2	1 1/2	1 1/2	1 1/2	1 1/2	1 1/2	1 1/2	1 1/2	1 1/2	1 1/2	1 1/2	1 1/2	2.4
RS 2	2	2	2	2	2	2	2	2	2	2	2	2	2	2	2	2	2.7
RS 2 1/2	2 1/2	2 1/2	2 1/2	2 1/2	2 1/2	2 1/2	2 1/2	2 1/2	2 1/2	2 1/2	2 1/2	2 1/2	2 1/2	2 1/2	2 1/2	2 1/2	3.0
RS 3	3	3	3	3	3	3	3	3	3	3	3	3	3	3	3	3	3.3
RS 3 1/2	3 1/2	3 1/2	3 1/2	3 1/2	3 1/2	3 1/2	3 1/2	3 1/2	3 1/2	3 1/2	3 1/2	3 1/2	3 1/2	3 1/2	3 1/2	3 1/2	3.6
RS 4	4	4	4	4	4	4	4	4	4	4	4	4	4	4	4	4	3.9
RS 4 1/2	4 1/2	4 1/2	4 1/2	4 1/2	4 1/2	4 1/2	4 1/2	4 1/2	4 1/2	4 1/2	4 1/2	4 1/2	4 1/2	4 1/2	4 1/2	4 1/2	4.2
RS 5	5	5	5	5	5	5	5	5	5	5	5	5	5	5	5	5	4.5
RS 5 1/2	5 1/2	5 1/2	5 1/2	5 1/2	5 1/2	5 1/2	5 1/2	5 1/2	5 1/2	5 1/2	5 1/2	5 1/2	5 1/2	5 1/2	5 1/2	5 1/2	4.8
RS 6	6	6	6	6	6	6	6	6	6	6	6	6	6	6	6	6	5.1
RS 6 1/2	6 1/2	6 1/2	6 1/2	6 1/2	6 1/2	6 1/2	6 1/2	6 1/2	6 1/2	6 1/2	6 1/2	6 1/2	6 1/2	6 1/2	6 1/2	6 1/2	5.4
RS 7	7	7	7	7	7	7	7	7	7	7	7	7	7	7	7	7	5.7
RS 7 1/2	7 1/2	7 1/2	7 1/2	7 1/2	7 1/2	7 1/2	7 1/2	7 1/2	7 1/2	7 1/2	7 1/2	7 1/2	7 1/2	7 1/2	7 1/2	7 1/2	6.0
RS 8	8	8	8	8	8	8	8	8	8	8	8	8	8	8	8	8	6.3
RS 8 1/2	8 1/2	8 1/2	8 1/2	8 1/2	8 1/2	8 1/2	8 1/2	8 1/2	8 1/2	8 1/2	8 1/2	8 1/2	8 1/2	8 1/2	8 1/2	8 1/2	6.6
RS 9	9	9	9	9	9	9	9	9	9	9	9	9	9	9	9	9	6.9
RS 9 1/2	9 1/2	9 1/2	9 1/2	9 1/2	9 1/2	9 1/2	9 1/2	9 1/2	9 1/2	9 1/2	9 1/2	9 1/2	9 1/2	9 1/2	9 1/2	9 1/2	7.2
RS 10	10	10	10	10	10	10	10	10	10	10	10	10	10	10	10	10	7.5

These Data Represent Closest

Dimensions and are subject to change without notice. Reproduction of this information without permission is prohibited.

Note: These dimensions are given in inches. All dimensions are in inches unless otherwise specified.

'RHS' SERIES

BASIC DIMENSIONAL DATA



Model	A	B	C	D	E	F	G	H	I	J	K	L	M	N	O	P	Q	R	S	T	U	V	W	X	Y	Z	AA	AB	AC	AD	AE	AF	AG	AH	AI	AJ	AK	AL	AM	AN	AO	AP	AQ	AR	AS	AT	AU	AV	AW	AX	AY	AZ	BA	BB	BC	BD	BE	BF	BG	BH	BI	BJ	BK	BL	BM	BN	BO	BP	BQ	BR	BS	BT	BU	BV	BW	BX	BY	BZ	CA	CB	CC	CD	CE	CF	CG	CH	CI	CJ	CK	CL	CM	CN	CO	CP	CQ	CR	CS	CT	CU	CV	CW	CX	CY	CZ	DA	DB	DC	DD	DE	DF	DG	DH	DI	DJ	DK	DL	DM	DN	DO	DP	DQ	DR	DS	DT	DU	DV	DW	DX	DY	DZ	EA	EB	EC	ED	EE	EF	EG	EH	EI	EJ	EK	EL	EM	EN	EO	EP	EQ	ER	ES	ET	EU	EV	EW	EX	EY	EZ	FA	FB	FC	FD	FE	FF	FG	FH	FI	FJ	FK	FL	FM	FN	FO	FP	FQ	FR	FS	FT	FU	FV	FW	FX	FY	FZ	GA	GB	GC	GD	GE	GF	GG	GH	GI	GJ	GK	GL	GM	GN	GO	GP	GQ	GR	GS	GT	GU	GV	GW	GX	GY	GZ	HA	HB	HC	HD	HE	HF	HG	HH	HI	HJ	HK	HL	HM	HN	HO	HP	HQ	HR	HS	HT	HU	HV	HW	HX	HY	HZ	IA	IB	IC	ID	IE	IF	IG	IH	II	IJ	IK	IL	IM	IN	IO	IP	IQ	IR	IS	IT	IU	IV	IW	IX	IY	IZ	JA	JB	JC	JD	JE	JF	JG	JH	JI	JJ	JK	JL	JM	JN	JO	JP	JQ	JR	JS	JT	JU	JV	JW	JX	JY	JZ	KA	KB	KC	KD	KE	KF	KG	KH	KI	KJ	KK	KL	KM	KN	KO	KP	KQ	KR	KS	KT	KU	KV	KW	KX	KY	KZ	LA	LB	LC	LD	LE	LF	LG	LH	LI	LJ	LK	LL	LM	LN	LO	LP	LQ	LR	LS	LT	LU	LV	LW	LX	LY	LZ	MA	MB	MC	MD	ME	MF	MG	MH	MI	MJ	MK	ML	MM	MN	MO	MP	MQ	MR	MS	MT	MU	MV	MW	MX	MY	MZ	NA	NB	NC	ND	NE	NF	NG	NH	NI	NJ	NK	NL	NM	NN	NO	NP	NQ	NR	NS	NT	NU	NV	NW	NX	NY	NZ	OA	OB	OC	OD	OE	OF	OG	OH	OI	OJ	OK	OL	OM	ON	OO	OP	OQ	OR	OS	OT	OU	OV	OW	OX	OY	OZ	PA	PB	PC	PD	PE	PF	PG	PH	PI	PJ	PK	PL	PM	PN	PO	PP	PQ	PR	PS	PT	PU	PV	PW	PX	PY	PZ	QA	QB	QC	QD	QE	QF	QG	QH	QI	QJ	QK	QL	QM	QN	QO	QP	QQ	QR	QS	QT	QU	QV	QW	QX	QY	QZ	RA	RB	RC	RD	RE	RF	RG	RH	RI	RJ	RK	RL	RM	RN	RO	RP	RQ	RR	RS	RT	RU	RV	RW	RX	RY	RZ	SA	SB	SC	SD	SE	SF	SG	SH	SI	SJ	SK	SL	SM	SN	SO	SP	SQ	SR	SS	ST	SU	SV	SW	SX	SY	SZ	TA	TB	TC	TD	TE	TF	TG	TH	TI	TJ	TK	TL	TM	TN	TO	TP	TQ	TR	TS	TT	TU	TV	TW	TX	TY	TZ	UA	UB	UC	UD	UE	UF	UG	UH	UI	UJ	UK	UL	UM	UN	UO	UP	UQ	UR	US	UT	UU	UV	UW	UX	UY	UZ	VA	VB	VC	VD	VE	VF	VG	VH	VI	VJ	VK	VL	VM	VN	VO	VP	VQ	VR	VS	VT	VU	VV	VW	VX	VY	VZ	WA	WB	WC	WD	WE	WF	WG	WH	WI	WJ	WK	WL	WM	WN	WO	WP	WQ	WR	WS	WT	WU	WV	WW	WX	WY	WZ	XA	XB	XC	XD	XE	XF	YG	YH	YI	YJ	YK	YL	YM	YN	YO	YP	YQ	YR	YS	YT	YU	YV	YW	YX	YY	YZ	ZA	ZB	ZC	ZD	ZE	ZF	ZG	ZH	ZI	ZJ	ZK	ZL	ZM	ZN	ZO	ZP	ZQ	ZR	ZS	ZT	ZU	ZV	ZW	ZX	ZY	ZZ
Model A	0.0000	0.0000	0.0000	0.0000	0.0000	0.0000	0.0000	0.0000	0.0000	0.0000	0.0000	0.0000	0.0000	0.0000	0.0000	0.0000	0.0000	0.0000	0.0000	0.0000	0.0000	0.0000	0.0000	0.0000	0.0000	0.0000	0.0000	0.0000	0.0000	0.0000	0.0000	0.0000	0.0000	0.0000	0.0000	0.0000	0.0000	0.0000	0.0000	0.0000	0.0000	0.0000	0.0000	0.0000	0.0000	0.0000	0.0000	0.0000	0.0000	0.0000	0.0000	0.0000	0.0000	0.0000	0.0000	0.0000	0.0000	0.0000	0.0000	0.0000	0.0000	0.0000	0.0000	0.0000	0.0000	0.0000	0.0000	0.0000	0.0000	0.0000	0.0000	0.0000	0.0000	0.0000	0.0000	0.0000	0.0000	0.0000	0.0000	0.0000	0.0000	0.0000	0.0000	0.0000	0.0000	0.0000	0.0000	0.0000	0.0000	0.0000	0.0000	0.0000	0.0000	0.0000	0.0000	0.0000	0.0000	0.0000	0.0000	0.0000	0.0000	0.0000	0.0000	0.0000	0.0000	0.0000	0.0000	0.0000	0.0000	0.0000	0.0000	0.0000	0.0000	0.0000	0.0000	0.0000	0.0000	0.0000	0.0000	0.0000	0.0000	0.0000	0.0000	0.0000	0.0000	0.0000	0.0000	0.0000	0.0000	0.0000	0.0000	0.0000	0.0000	0.0000	0.0000	0.0000	0.0000	0.0000	0.0000	0.0000	0.0000	0.0000	0.0000	0.0000	0.0000	0.0000	0.0000	0.0000	0.0000	0.0000	0.0000	0.0000	0.0000	0.0000	0.0000	0.0000	0.0000	0.0000	0.0000	0.0000	0.0000	0.0000	0.0000	0.0000	0.0000	0.0000	0.0000	0.0000	0.0000	0.0000	0.0000	0.0000	0.0000	0.0000	0.0000	0.0000	0.0000	0.0000	0.0000	0.0000	0.0000	0.0000	0.0000	0.0000	0.0000	0.0000	0.0000	0.0000	0.0000	0.0000	0.0000	0.0000	0.0000	0.0000	0.0000	0.0000	0.0000	0.0000	0.0000	0.0000	0.0000	0.0000	0.0000	0.0000	0.0000	0.0000	0.0000	0.0000	0.0000	0.0000	0.0000	0.0000	0.0000	0.0000	0.0000	0.0000	0.0000	0.0000	0.0000	0.0000	0.0000	0.0000	0.0000	0.0000	0.0000	0.0000	0.0000	0.0000	0.0000	0.0000	0.0000	0.0000	0.0000	0.0000	0.0000	0.0000	0.0000	0.0000	0.0000	0.0000	0.0000	0.0000	0.0000	0.0000	0.0000	0.0000	0.0000	0.0000	0.0000	0.0000	0.0000	0.0000	0.0000	0.0000	0.0000	0.0000	0.0000	0.0000	0.0000	0.0000	0.0000	0.0000	0.0000	0.0000	0.0000	0.0000	0.0000	0.0000	0.0000	0.0000	0.0000	0.0000	0.0000	0.0000	0.0000	0.0000	0.0000	0.0000	0.0000	0.0000	0.0000	0.0000	0.0000	0.0000	0.0000	0.0000	0.0000	0.0000	0.0000	0.0000	0.0000	0.0000	0.0000	0.0000	0.0000	0.0000	0.0000	0.0000	0.0000	0.0000	0.0000	0.0000	0.0000	0.0000	0.0000	0.0000	0.0000	0.0000	0.0000	0.0000	0.0000	0.0000	0.0000	0.0000	0.0000	0.0000	0.0000	0.0000	0.0000	0.0000	0.0000	0.0000	0.0000	0.0000	0.0000	0.0000	0.0000	0.0000	0.0000	0.0000	0.0000	0.0000	0.0000	0.0000	0.0000	0.0000	0.0000	0.0000	0.0000	0.0000	0.0000	0.0000	0.0000	0.0000	0.0000	0.0000	0.0000	0.0000	0.0000	0.0000	0.0000	0.0000	0.0000	0.0000	0.0000	0.0000	0.0000	0.0000	0.0000	0.0000	0.0000	0.0000	0.0000	0.0000	0.0000	0.0000	0.0000	0.0000	0.0000	0.0000	0.0000	0.0000	0.0000	0.0																																																																																																																																																																																																																																																																																																														

*Values shown are approximate.

Dimensions shown are in millimeters unless otherwise specified.
All dimensions are in millimeters unless otherwise specified.

Notes: All dimensions are in millimeters unless otherwise specified.
All dimensions are in millimeters unless otherwise specified.



'RS25'/'RH525' SERIES

Basic Dimensional Data



Model	A	B	C	D	E	F	G	H	Output shaft to input shaft	I	J	K	L	M	N	Weight
RS25-1	25	25	25	25	25	25	25	25		25	25	25	25	25	25	12.5 kg
RS25-2	25	25	25	25	25	25	25	25		25	25	25	25	25	25	12.5 kg
RS25-3	25	25	25	25	25	25	25	25		25	25	25	25	25	25	12.5 kg
RS25-4	25	25	25	25	25	25	25	25		25	25	25	25	25	25	12.5 kg
RS25-5	25	25	25	25	25	25	25	25		25	25	25	25	25	25	12.5 kg
RS25-6	25	25	25	25	25	25	25	25		25	25	25	25	25	25	12.5 kg
RS25-7	25	25	25	25	25	25	25	25								12.5 kg
RS25-8	25	25	25	25	25	25	25	25								12.5 kg

Table Data Period: October

Dimensions shown are average values for the use of standard materials, components, and standard components.

Note: These dimensions are for the use of standard materials and components.



Model	A	B	C	D	E	F	G	H	Output shaft to input shaft	I	J	K	L	M	N	Weight
RS25-1	25	25	25	25	25	25	25	25		25	25	25	25	25	25	12.5 kg
RS25-2	25	25	25	25	25	25	25	25		25	25	25	25	25	25	12.5 kg
RS25-3	25	25	25	25	25	25	25	25		25	25	25	25	25	25	12.5 kg
RS25-4	25	25	25	25	25	25	25	25		25	25	25	25	25	25	12.5 kg
RS25-5	25	25	25	25	25	25	25	25		25	25	25	25	25	25	12.5 kg
RS25-6	25	25	25	25	25	25	25	25		25	25	25	25	25	25	12.5 kg
RS25-7	25	25	25	25	25	25	25	25								12.5 kg
RS25-8	25	25	25	25	25	25	25	25								12.5 kg

Table Data Period: October

Dimensions shown are average values for the use of standard materials, components, and standard components.

Note: These dimensions are for the use of standard materials and components.

ACS25 ACS SERIES

Abstract



Year	1	2	3	4	5	6	7	8	9	10	11	12	13	14	15	16	17	18	19	20	21	22	23	24	25	26	27	28	29	30	31	32	33	34	35	36	37	38	39	40	41	42	43	44	45	46	47	48	49	50	51	52	53	54	55	56	57	58	59	60	61	62	63	64	65	66	67	68	69	70	71	72	73	74	75	76	77	78	79	80	81	82	83	84	85	86	87	88	89	90	91	92	93	94	95	96	97	98	99	100
1990	1	2	3	4	5	6	7	8	9	10	11	12	13	14	15	16	17	18	19	20	21	22	23	24	25	26	27	28	29	30	31	32	33	34	35	36	37	38	39	40	41	42	43	44	45	46	47	48	49	50	51	52	53	54	55	56	57	58	59	60	61	62	63	64	65	66	67	68	69	70	71	72	73	74	75	76	77	78	79	80	81	82	83	84	85	86	87	88	89	90	91	92	93	94	95	96	97	98	99	100
1991	1	2	3	4	5	6	7	8	9	10	11	12	13	14	15	16	17	18	19	20	21	22	23	24	25	26	27	28	29	30	31	32	33	34	35	36	37	38	39	40	41	42	43	44	45	46	47	48	49	50	51	52	53	54	55	56	57	58	59	60	61	62	63	64	65	66	67	68	69	70	71	72	73	74	75	76	77	78	79	80	81	82	83	84	85	86	87	88	89	90	91	92	93	94	95	96	97	98	99	100
1992	1	2	3	4	5	6	7	8	9	10	11	12	13	14	15	16	17	18	19	20	21	22	23	24	25	26	27	28	29	30	31	32	33	34	35	36	37	38	39	40	41	42	43	44	45	46	47	48	49	50	51	52	53	54	55	56	57	58	59	60	61	62	63	64	65	66	67	68	69	70	71	72	73	74	75	76	77	78	79	80	81	82	83	84	85	86	87	88	89	90	91	92	93	94	95	96	97	98	99	100

© 2005 Blackwell Publishing Ltd, *Journal of Internal Medicine* 258: 105–112

NOTE: *Source:* International Labour Office, *World Employment Report 1996*, p. 10.



Year	1990	1991	1992	1993	1994	1995	1996	1997	1998	1999	2000	2001	2002	2003	2004	2005	2006	2007	2008	2009	2010	2011	2012	2013	2014	2015	2016	2017	2018	2019	2020	2021	2022	2023	2024	2025	2026	2027	2028	2029	2030	2031	2032	2033	2034	2035	2036	2037	2038	2039	2040	2041	2042	2043	2044	2045	2046	2047	2048	2049	2050	2051	2052	2053	2054	2055	2056	2057	2058	2059	2060	2061	2062	2063	2064	2065	2066	2067	2068	2069	2070	2071	2072	2073	2074	2075	2076	2077	2078	2079	2080	2081	2082	2083	2084	2085	2086	2087	2088	2089	2090	2091	2092	2093	2094	2095	2096	2097	2098	2099	2100
1990	1990	1991	1992	1993	1994	1995	1996	1997	1998	1999	2000	2001	2002	2003	2004	2005	2006	2007	2008	2009	2010	2011	2012	2013	2014	2015	2016	2017	2018	2019	2020	2021	2022	2023	2024	2025	2026	2027	2028	2029	2030	2031	2032	2033	2034	2035	2036	2037	2038	2039	2040	2041	2042	2043	2044	2045	2046	2047	2048	2049	2050	2051	2052	2053	2054	2055	2056	2057	2058	2059	2060	2061	2062	2063	2064	2065	2066	2067	2068	2069	2070	2071	2072	2073	2074	2075	2076	2077	2078	2079	2080	2081	2082	2083	2084	2085	2086	2087	2088	2089	2090	2091	2092	2093	2094	2095	2096	2097	2098	2099	2100
1991	1991	1992	1993	1994	1995	1996	1997	1998	1999	2000	2001	2002	2003	2004	2005	2006	2007	2008	2009	2010	2011	2012	2013	2014	2015	2016	2017	2018	2019	2020	2021	2022	2023	2024	2025	2026	2027	2028	2029	2030	2031	2032	2033	2034	2035	2036	2037	2038	2039	2040	2041	2042	2043	2044	2045	2046	2047	2048	2049	2050	2051	2052	2053	2054	2055	2056	2057	2058	2059	2060	2061	2062	2063	2064	2065	2066	2067	2068	2069	2070	2071	2072	2073	2074	2075	2076	2077	2078	2079	2080	2081	2082	2083	2084	2085	2086	2087	2088	2089	2090	2091	2092	2093	2094	2095	2096	2097	2098	2099	2100	
1992	1992	1993	1994	1995	1996	1997	1998	1999	2000	2001	2002	2003	2004	2005	2006	2007	2008	2009	2010	2011	2012	2013	2014	2015	2016	2017	2018	2019	2020	2021	2022	2023	2024	2025	2026	2027	2028	2029	2030	2031	2032	2033	2034	2035	2036	2037	2038	2039	2040	2041	2042	2043	2044	2045	2046	2047	2048	2049	2050	2051	2052	2053	2054	2055	2056	2057	2058	2059	2060	2061	2062	2063	2064	2065	2066	2067	2068	2069	2070	2071	2072	2073	2074	2075	2076	2077	2078	2079	2080	2081	2082	2083	2084	2085	2086	2087	2088	2089	2090	2091	2092	2093	2094	2095	2096	2097	2098	2099	2100		
1993	1993	1994	1995	1996	1997	1998	1999	2000	2001	2002	2003	2004	2005	2006	2007	2008	2009	2010	2011	2012	2013	2014	2015	2016	2017	2018	2019	2020	2021	2022	2023	2024	2025	2026	2027	2028	2029	2030	2031	2032	2033	2034	2035	2036	2037	2038	2039	2040	2041	2042	2043	2044	2045	2046	2047	2048	2049	2050	2051	2052	2053	2054	2055	2056	2057	2058	2059	2060	2061	2062	2063	2064	2065	2066	2067	2068	2069	2070	2071	2072	2073	2074	2075	2076	2077	2078	2079	2080	2081	2082	2083	2084	2085	2086	2087	2088	2089	2090	2091	2092	2093	2094	2095	2096	2097	2098	2099	2100			
1994	1994	1995	1996	1997	1998	1999	2000	2001	2002	2003	2004	2005	2006	2007	2008	2009	2010	2011	2012	2013	2014	2015	2016	2017	2018	2019	2020	2021	2022	2023	2024	2025	2026	2027	2028	2029	2030	2031	2032	2033	2034	2035	2036	2037	2038	2039	2040	2041	2042	2043	2044	2045	2046	2047	2048	2049	2050	2051	2052	2053	2054	2055	2056	2057	2058	2059	2060	2061	2062	2063	2064	2065	2066	2067	2068	2069	2070	2071	2072	2073	2074	2075	2076	2077	2078	2079	2080	2081	2082	2083	2084	2085	2086	2087	2088	2089	2090	2091	2092	2093	2094	2095	2096	2097	2098	2099	2100				
1995	1995	1996	1997	1998	1999	2000	2001	2002	2003	2004	2005	2006	2007	2008	2009	2010	2011	2012	2013	2014	2015	2016	2017	2018	2019	2020	2021	2022	2023	2024	2025	2026	2027	2028	2029	2030	2031	2032	2033	2034	2035	2036	2037	2038	2039	2040	2041	2042	2043	2044	2045	2046	2047	2048	2049	2050	2051	2052	2053	2054	2055	2056	2057	2058	2059	2060	2061	2062	2063	2064	2065	2066	2067	2068	2069	2070	2071	2072	2073	2074	2075	2076	2077	2078	2079	2080	2081	2082	2083	2084	2085	2086	2087	2088	2089	2090	2091	2092	2093	2094	2095	2096	2097	2098	2099	2100					

[illegible]

1. <i>Chrysomelids</i>	2. <i>Curculionids</i>	3. <i>Chrysomelids</i>
4. <i>Chrysomelids</i>	5. <i>Curculionids</i>	6. <i>Chrysomelids</i>

TABLE 1. *Estimated number of people in the United States with a history of a mental disorder, by age group and sex, 1990*



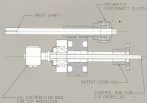
LUFKIN MARINE GEARING FOR CONTROLLABLE PITCH PROPELLERS

Lufkin designs and manufactures a complete line of gears for use with controllable pitch propellers. They can operate in either engine or motor engine drives and can operate with either manual or Coast Guard or International remote controls.

To obtain complete details for controllable pitch propeller installation,

see us for the full data, including drawings, a complete description and early reply to the C/P gear drive.

Available for inspection only these gears, Lufkin manufactures with virtually no changeover in design and fitting for bearing.



Marine Reduction Gearing with
Decoupler Gear and Thrust Gear
for C/P Propeller



'VSQ' SERIES

BASIC DIMENSIONAL DATA



Model	A	B	C	D	E	F	G	H	I	J	K	L	M	N	O	P	Q	Weight
VSQ 10	100	100	100	100	100	100	100	100	100	100	100	100	100	100	100	100	100	100
VSQ 15	150	150	150	150	150	150	150	150	150	150	150	150	150	150	150	150	150	150
VSQ 20	200	200	200	200	200	200	200	200	200	200	200	200	200	200	200	200	200	200
VSQ 25	250	250	250	250	250	250	250	250	250	250	250	250	250	250	250	250	250	250
VSQ 30	300	300	300	300	300	300	300	300	300	300	300	300	300	300	300	300	300	300
VSQ 35	350	350	350	350	350	350	350	350	350	350	350	350	350	350	350	350	350	350
VSQ 40	400	400	400	400	400	400	400	400	400	400	400	400	400	400	400	400	400	400
VSQ 45	450	450	450	450	450	450	450	450	450	450	450	450	450	450	450	450	450	450
VSQ 50	500	500	500	500	500	500	500	500	500	500	500	500	500	500	500	500	500	500
VSQ 55	550	550	550	550	550	550	550	550	550	550	550	550	550	550	550	550	550	550
VSQ 60	600	600	600	600	600	600	600	600	600	600	600	600	600	600	600	600	600	600
VSQ 65	650	650	650	650	650	650	650	650	650	650	650	650	650	650	650	650	650	650
VSQ 70	700	700	700	700	700	700	700	700	700	700	700	700	700	700	700	700	700	700
VSQ 75	750	750	750	750	750	750	750	750	750	750	750	750	750	750	750	750	750	750
VSQ 80	800	800	800	800	800	800	800	800	800	800	800	800	800	800	800	800	800	800
VSQ 85	850	850	850	850	850	850	850	850	850	850	850	850	850	850	850	850	850	850
VSQ 90	900	900	900	900	900	900	900	900	900	900	900	900	900	900	900	900	900	900
VSQ 95	950	950	950	950	950	950	950	950	950	950	950	950	950	950	950	950	950	950
VSQ 100	1000	1000	1000	1000	1000	1000	1000	1000	1000	1000	1000	1000	1000	1000	1000	1000	1000	1000

*Technical Data Subject to Change *Dimensions of base dimensions shown (all dimensions) *Notes: Mounting dimensions are for 1/2" & 3/4" shafts (all dimensions) *All dimensions are in mm (inches) unless otherwise specified

HSQ SERIES

BASIC DIMENSIONAL DATA

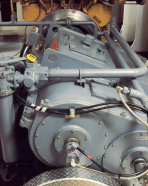


Model	A	B	C	D	E	F	G	H	I	J	K	L	M	N	O	P	Q	R	S	T	U	V	W	X	Y	Z	AA	AB	AC	AD	AE	AF	AG	AH	AI	AJ	AK	AL	AM	AN	AO	AP	AQ	AR	AS	AT	AU	AV	AW	AX	AY	AZ	BA	BB	BC	BD	BE	BF	BG	BH	BI	BJ	BK	BL	BM	BN	BO	BP	BQ	BR	BS	BT	BU	BV	BW	BX	BY	BZ	CA	CB	CC	CD	CE	CF	CG	CH	CI	CJ	CK	CL	CM	CN	CO	CP	CQ	CR	CS	CT	CU	CV	CW	CX	CY	CZ	DA	DB	DC	DD	DE	DF	DG	DH	DI	DJ	DK	DL	DM	DN	DO	DP	DQ	DR	DS	DT	DU	DV	DW	DX	DY	DZ	EA	EB	EC	ED	EE	EF	EG	EH	EI	EJ	EK	EL	EM	EN	EO	EP	EQ	ER	ES	ET	EU	EV	EW	EX	EY	EZ	FA	FB	FC	FD	FE	FF	FG	FH	FI	FJ	FK	FL	FM	FN	FO	FP	FQ	FR	FS	FT	FU	FV	FW	FX	FY	FZ	GA	GB	GC	GD	GE	GF	GG	GH	GI	GJ	GK	GL	GM	GN	GO	GP	GQ	GR	GS	GT	GU	GV	GW	GX	GY	GZ	HA	HB	HC	HD	HE	HF	HG	HH	HI	HJ	HK	HL	HM	HN	HO	HP	HQ	HR	HS	HT	HU	HV	HW	HX	HY	HZ	IA	IB	IC	ID	IE	IF	IG	IH	II	IJ	IK	IL	IM	IN	IO	IP	IQ	IR	IS	IT	IU	IV	IW	IX	IY	IZ	JA	JB	JC	JD	JE	JF	JG	JH	JI	JJ	JK	JL	JM	JN	JO	JP	JQ	JR	JS	JT	JU	JV	JW	JX	JY	JZ	KA	KB	KC	KD	KE	KF	KG	KH	KI	KJ	KK	KL	KM	KN	KO	KP	KQ	KR	KS	KT	KU	KV	KW	KX	KY	KZ	LA	LB	LC	LD	LE	LF	LG	LH	LI	LJ	LK	LL	LM	LN	LO	LP	LQ	LR	LS	LT	LU	LV	LW	LX	LY	LZ	MA	MB	MC	MD	ME	MF	MG	MH	MI	MJ	MK	ML	MM	MN	MO	MP	MQ	MR	MS	MT	MU	MV	MW	MX	MY	MZ	NA	NB	NC	ND	NE	NF	NG	NH	NI	NJ	NK	NL	NM	NN	NO	NP	NQ	NR	NS	NT	NU	NV	NW	NX	NY	NZ	OA	OB	OC	OD	OE	OF	OG	OH	OI	OJ	OK	OL	OM	ON	OO	OP	OQ	OR	OS	OT	OU	OV	OW	OX	OY	OZ	PA	PB	PC	PD	PE	PF	PG	PH	PI	PJ	PK	PL	PM	PN	PO	PP	PQ	PR	PS	PT	PU	PV	PW	PX	PY	PZ	QA	QB	QC	QD	QE	QF	QG	QH	QI	QJ	QK	QL	QM	QN	QO	QP	QQ	QR	QS	QT	QU	QV	QW	QX	QY	QZ	RA	RB	RC	RD	RE	RF	RG	RH	RI	RJ	RK	RL	RM	RN	RO	RP	RQ	RR	RS	RT	RU	RV	RW	RX	RY	RZ	SA	SB	SC	SD	SE	SF	SG	SH	SI	SJ	SK	SL	SM	SN	SO	SP	SQ	SR	SS	ST	SU	SV	SW	SX	SY	SZ	TA	TB	TC	TD	TE	TF	TG	TH	TI	TJ	TK	TL	TM	TN	TO	TP	TQ	TR	TS	TT	TU	TV	TW	TX	TY	TZ	UA	UB	UC	UD	UE	UF	UG	UH	UI	UJ	UK	UL	UM	UN	UO	UP	UQ	UR	US	UT	UU	UV	UW	UX	UY	UZ	VA	VB	VC	VD	VE	VF	VG	VH	VI	VJ	VK	VL	VM	VN	VO	VP	VQ	VR	VS	VT	VU	VV	VW	VX	VY	VZ	WA	WB	WC	WD	WE	WF	WG	WH	WI	WJ	WK	WL	WM	WN	WO	WP	WQ	WR	WS	WT	WU	WV	WW	WX	WY	WZ	XA	XB	XC	XD	XE	XF	YG	YH	YI	YJ	YK	YL	YM	YN	YO	YP	YQ	YR	YS	YT	YU	YV	YW	YX	YY	YZ	ZA	ZB	ZC	ZD	ZE	ZF	ZG	ZH	ZI	ZJ	ZK	ZL	ZM	ZN	ZO	ZP	ZQ	ZR	ZS	ZT	ZU	ZV	ZW	ZX	ZY	ZZ
-------	---	---	---	---	---	---	---	---	---	---	---	---	---	---	---	---	---	---	---	---	---	---	---	---	---	---	----	----	----	----	----	----	----	----	----	----	----	----	----	----	----	----	----	----	----	----	----	----	----	----	----	----	----	----	----	----	----	----	----	----	----	----	----	----	----	----	----	----	----	----	----	----	----	----	----	----	----	----	----	----	----	----	----	----	----	----	----	----	----	----	----	----	----	----	----	----	----	----	----	----	----	----	----	----	----	----	----	----	----	----	----	----	----	----	----	----	----	----	----	----	----	----	----	----	----	----	----	----	----	----	----	----	----	----	----	----	----	----	----	----	----	----	----	----	----	----	----	----	----	----	----	----	----	----	----	----	----	----	----	----	----	----	----	----	----	----	----	----	----	----	----	----	----	----	----	----	----	----	----	----	----	----	----	----	----	----	----	----	----	----	----	----	----	----	----	----	----	----	----	----	----	----	----	----	----	----	----	----	----	----	----	----	----	----	----	----	----	----	----	----	----	----	----	----	----	----	----	----	----	----	----	----	----	----	----	----	----	----	----	----	----	----	----	----	----	----	----	----	----	----	----	----	----	----	----	----	----	----	----	----	----	----	----	----	----	----	----	----	----	----	----	----	----	----	----	----	----	----	----	----	----	----	----	----	----	----	----	----	----	----	----	----	----	----	----	----	----	----	----	----	----	----	----	----	----	----	----	----	----	----	----	----	----	----	----	----	----	----	----	----	----	----	----	----	----	----	----	----	----	----	----	----	----	----	----	----	----	----	----	----	----	----	----	----	----	----	----	----	----	----	----	----	----	----	----	----	----	----	----	----	----	----	----	----	----	----	----	----	----	----	----	----	----	----	----	----	----	----	----	----	----	----	----	----	----	----	----	----	----	----	----	----	----	----	----	----	----	----	----	----	----	----	----	----	----	----	----	----	----	----	----	----	----	----	----	----	----	----	----	----	----	----	----	----	----	----	----	----	----	----	----	----	----	----	----	----	----	----	----	----	----	----	----	----	----	----	----	----	----	----	----	----	----	----	----	----	----	----	----	----	----	----	----	----	----	----	----	----	----	----	----	----	----	----	----	----	----	----	----	----	----	----	----	----	----	----	----	----	----	----	----	----	----	----	----	----	----	----	----	----	----	----	----	----	----	----	----	----	----	----	----	----	----	----	----	----	----	----	----	----	----	----	----	----	----	----	----	----	----	----	----	----	----	----	----	----	----	----	----	----	----	----	----	----	----	----	----	----	----	----	----	----	----	----	----	----	----	----	----	----	----	----	----	----	----	----	----	----	----	----	----	----	----	----	----	----	----	----	----	----	----	----	----	----	----	----	----	----	----	----	----	----	----	----	----	----	----	----	----	----	----	----	----	----	----	----	----	----	----	----	----	----	----	----	----	----	----	----	----	----	----	----	----	----	----	----	----	----	----	----	----	----	----	----	----	----	----	----	----	----	----	----	----	----	----	----	----	----	----	----	----	----	----	----	----	----	----	----	----	----	----	----	----	----	----	----	----	----	----	----	----	----	----	----	----	----

Vacuum cleaner technical data

Dimensions shown are approximate values for reference only, depending on local standards and customer requirements.

Note: Models shown are not intended to be exhaustive. (All dimensions in mm, unless stated)



LIFTING GEAR

Power Pack
The 10000 Series engine is built with the same 10000 Series engine, 10000 Series engine, 10000 Series engine.

© 2000 Blackwell Science Ltd, *Journal of Internal Medicine* 247: 399–406



LUPKIN

100 West 4th • 100 West Street
Lubbock, Texas 79401-0000
Phone: 806/741-1000
Fax: 806/741-1000
Web: www.lupkin-gear.com