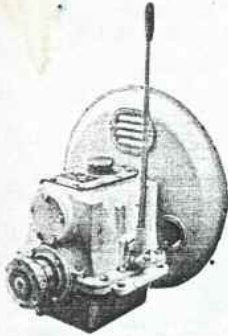


## 06 12HP/2100RPM

CHRCTRSTC: Purely mechanical, several optional input couplings  
 L X W X H: 350 X 445 X 482 mm N.W. 66 kg

| NOMINAL RATIO | EXACT RATIO | RATE(HP/RPM) |
|---------------|-------------|--------------|
| 2.5 : 1       | 2.52 : 1    | 0.006        |
| 3 : 1         | 3.05 : 1    | 0.006        |
| 3.5 : 1       | 3.50 : 1    | 0.006        |

RCMMD ENGINE: YANMAR TS130, TS155; HATZ E786



## 16A 32HP/2000RPM

CHRCTRSTC: Purely mechanical, several optional input couplings  
 L X W X H: 422 X 555 X 563 mm N.W. 92 kg

| NOMINAL RATIO | EXACT RATIO | RATE(HP/RPM) |
|---------------|-------------|--------------|
| 2.1 : 1       | 2.07 : 1    | 0.016        |
| 2.5 : 1       | 2.48 : 1    | 0.016        |
| 3 : 1         | 2.95 : 1    | 0.016        |
| 3.5 : 1       | 3.35 : 1    | 0.016        |
| 4 : 1         | 3.83 : 1    | 0.016        |

RCMMD ENGINE: YANMAR 2TD, HATZ 3M31

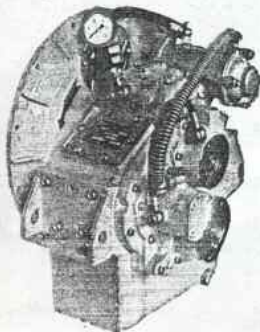


## MA100 30HP/3000RPM

CHRCTRSTC: Compact design, hydraulic control, PTO unit optional  
 BELL HOUSING: SAE 3, 4, 5 FLANGE: 7½", 10", 11½"  
 L X W X H: 275 X 420 X 420 mm N.W. 60 kg

| NOMINAL RATIO | EXACT RATIO | RATE(HP/RPM) |
|---------------|-------------|--------------|
| 1.5 : 1       | 1.6 : 1     | 0.012        |
| 2 : 1         | 2.0 : 1     | 0.012        |
| 2.5 : 1       | 2.55 : 1    | 0.010        |
| 3 : 1         | 3.11 : 1    | 0.010        |
| 3.5 : 1       | 3.59 : 1    | 0.008        |
| 4 : 1         | 3.88 : 1    | 0.008        |

RCMMD ENGINE: ISUZU UM02ABI; YANMAR 2TD; SLANZI  
 DVA155S2/IR

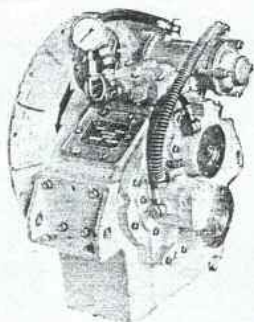


## MA125 67.5HP/3000RPM

CHRCTRSTC: Compact design, hydraulic control, PTO unit optional  
 BELL HOUSING: SAE 2, 3, 4 FLANGE: 10", 11½"  
 L X W X H: 343 X 494 X 485 mm N.W. 102 kg

| NOMINAL RATIO | EXACT RATIO | RATE(HP/RPM) |
|---------------|-------------|--------------|
| 2 : 1         | 2.03 : 1    | 0.027        |
| 2.5 : 1       | 2.46 : 1    | 0.027        |
| 3 : 1         | 3.04 : 1    | 0.024        |
| 3.5 : 1       | 3.57 : 1    | 0.022        |
| 4 : 1         | 4.05 : 1    | 0.019        |
| 4.5 : 1       | 4.39 : 1    | 0.015        |
| 5 : 1         | 4.7 : 1     | 0.015        |

RCMMD ENGINE: KELVIN 3104; PERKINS PRIMA M50,  
 ISUZU UM240; MWM D229-3

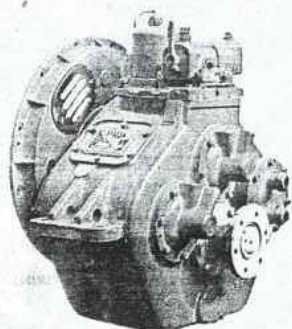


## MA142 90HP/2500RPM

CHRCTRSTC: Compact design, hydraulic control, PTO unit optional  
 BELL HOUSING: SAE 2, 3 FLANGE: 10", 11½"  
 L X W X H: 367 X 560 X 540 mm N.W. 130 kg

| NOMINAL RATIO | EXACT RATIO | RATE(HP/RPM) |
|---------------|-------------|--------------|
| 2 : 1         | 1.97 : 1    | 0.040        |
| 2.5 : 1       | 2.52 : 1    | 0.040        |
| 3 : 1         | 3.03 : 1    | 0.040        |
| 3.5 : 1       | 3.54 : 1    | 0.033        |
| 4 : 1         | 3.95 : 1    | 0.029        |
| 4.5 : 1       | 4.50 : 1    | 0.026        |
| 5 : 1         | 5.06 : 1    | 0.022        |
| 5.5 : 1       | 5.47 : 1    | 0.018        |

RCMMD ENGINE: CUMMINS 4B3.9-M; CAT 3304BNA  
 MTU 4R099AZ; FORD ESD442; NWM D229-4

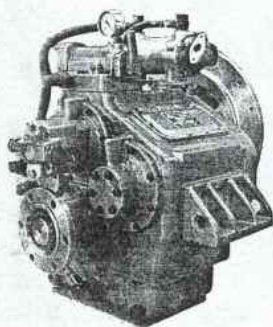


## 40A 80HP/2000RPM

CHRCTRSTC: Hydraulic control, most competitive price  
 BELL HOUSING: SAE 1, 2, 3 FLANGE: 11½", 14"  
 L X W X H: 490 X 670 X 620 mm N.W. 240 kg

| NOMINAL RATIO | EXACT RATIO | RATE(HP/RPM) |
|---------------|-------------|--------------|
| 2 : 1         | 2.066 : 1   | 0.040        |
| 3 : 1         | 2.957 : 1   | 0.040        |

RCMMD ENGINE: YANMAR 6CHLN; BAUDOUIN 4D106



## MB170 132HP/2500RPM

CHRCTRSTC: Hydraulic control, variety MBS170 in 2 ahead & 1 reverse  
 supplied on special order and PTO unit optional  
 BELL HOUSING: SAE 1, 2 FLANGE: 10", 11½", 14"  
 L X W X H: 510 X 670 X 656 mm N.W. 240 kg

| NOMINAL RATIO | EXACT RATIO | RATE(HP/RPM) |
|---------------|-------------|--------------|
| 2 : 1         | 1.973 : 1   | 0.053        |
| 2.5 : 1       | 2.516 : 1   | 0.053        |
| 3 : 1         | 3.037 : 1   | 0.053        |
| 3.5 : 1       | 3.542 : 1   | 0.053        |
| 4 : 1         | 3.955 : 1   | 0.053        |
| 4.5 : 1       | 4.500 : 1   | 0.042        |
| 5 : 1         | 5.056 : 1   | 0.042        |
| 5.5 : 1       | 5.471 : 1   | 0.036        |
| 6 : 1         | 5.875 : 1   | 0.036        |

RCMMD ENGINE: CUMMINS 6B5.9-M; KELVIN 6115; YANMAR  
 6CHE; SKL VD13.5/12; PERKINS 6HD100



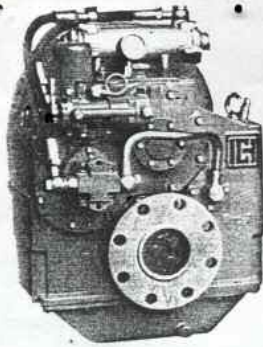
## 120C 340HP/2500RPM

CHRCTRSTC: Hydraulic control, compact design  
 BELL HOUSING: SAE 1, 2 FLANGE: 11½", 14"  
 L X W X H: 352 X 432 X 650 mm N.W. 200 kg

| NOMINAL RATIO | EXACT RATIO | RATE(HP/RPM) |
|---------------|-------------|--------------|
| 1.5 : 1       | 1.48 : 1    | 0.136        |
| 2 : 1         | 1.94 : 1    | 0.136        |
| 2.5 : 1       | 2.45 : 1    | 0.136        |
| 3 : 1         | 2.96 : 1    | 0.122        |
| 3.5 : 1       | 3.35 : 1    | 0.103        |

RCMMD ENGINE: CUMMINS 6CTA8.3-M1; CAT 3208TA  
 DAF DKXD1160M-ATi; YANMAR 6CHE-UTE  
 FORD DSD678MTL





## MB242 350HP/2500RPM

CHRCTRSTC: Design approved by LR, Mounting dimension identical to MG509

BELL HOUSING: SAE 1

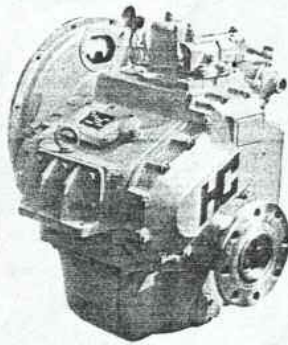
FLANGE: 14"

L X W X H: 536 X 566 X 792 mm

N.W. 360 kg

| NOMINAL RATIO | EXACT RATIO | RATE(HP/RPM) |
|---------------|-------------|--------------|
| 2.5 : 1       | 2.50 : 1    | 0.135        |
| 3 : 1         | 3.038 : 1   | 0.135        |
| 3.5 : 1       | 3.522 : 1   | 0.135        |
| 4 : 1         | 3.952 : 1   | 0.135        |
| 4.5 : 1       | 4.526 : 1   | 0.135        |
| 5 : 1         | 5.118 : 1   | 0.135        |
| 5.5 : 1       | 5.563 : 1   | 0.126        |
| 6 : 1         | 5.941 : 1   | 0.100        |

RCMMD ENGINE: CAT 3406BT; ISUZU UM109BI;  
BAUDOUIN 6P15.2; KELVIN 6137SC



## 135A 270HP/2000RPM

CHRCTRSTC: Design approved by LR, very popular in markets of South east of Asia; a variety QD135 with output shafts at both ends supplied on special order

BELL HOUSING: SAE 1

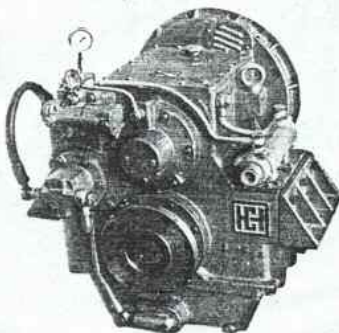
FLANGE: 14"

L X W X H: 578 X 792 X 830 mm

N.W. 450 kg

| NOMINAL RATIO | EXACT RATIO | RATE(HP/RPM) |
|---------------|-------------|--------------|
| 2 : 1         | 2.03 : 1    | 0.135        |
| 2.5 : 1       | 2.59 : 1    | 0.135        |
| 3 : 1         | 3.04 : 1    | 0.135        |
| 3.5 : 1       | 3.62 : 1    | 0.135        |
| 4 : 1         | 4.11 : 1    | 0.135        |
| 4.5 : 1       | 4.65 : 1    | 0.127        |
| 5 : 1         | 5.06 : 1    | 0.120        |
| 5.5 : 1       | 5.47 : 1    | 0.105        |
| 6 : 1         | 5.81 : 1    | 0.095        |

RCMMD ENGINE: CUMMINS N-855-M; CAT. 3306B SCAC;  
DAF DKVD1160M; DETROIT 6V-92TA  
YANMAR 6HA(M)-HTE



## MB270A 500HP/2500RPM

CHRCTRSTC: Design approved by LR, Mounting dimension identical to MG514, PTO unit on special order

BELL HOUSING: SAE 0, 1

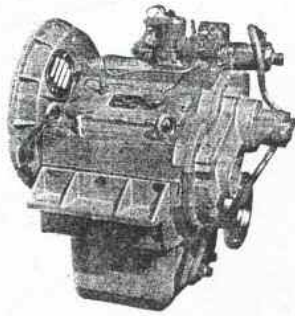
FLANGE: 14", 16" 18"

L X W X H: 715 X 890 X 946 mm

N.W. 650 kg

| NOMINAL RATIO | EXACT RATIO | RATE(HP/RPM) |
|---------------|-------------|--------------|
| 4 : 1         | 4.048 : 1   | 0.200        |
| 4.5 : 1       | 4.526 : 1   | 0.200        |
| 5 : 1         | 5.118 : 1   | 0.200        |
| 5.5 : 1       | 5.50 : 1    | 0.182        |
| 6 : 1         | 5.947 : 1   | 0.150        |
| 6.5 : 1       | 6.389 : 1   | 0.120        |
| 7 : 1         | 6.824 : 1   | 0.120        |

RCMMD ENGINE: CUMMINS VTA-903-M; KELVIN TGSC8;  
CAT 3406BTA; ISUZU UM12PB1TC;  
DAF DKX1160AM-ATI; DETROIT 6-71TI



## 300/D300A 875HP/2500RPM

**CHRCTRSTC:** Design approved by LR, wide ratios available, PTO unit optional, input direction can be altered by turning oil pump by 180 degree and varieties S300 and DS300 and QD300 supplied on special order

**BELL HOUSING:** SAE 0, 1 **FLANGE:** 14", 16" 18"  
**L X W X H:** N.W.  
 300 786 X 930 X 872 mm 700 kg  
 D300A 786 X 980 X 1038mm 940 kg

|       | NOM. RATIO | EXACT RATIO | RATE(HP/RPM) |
|-------|------------|-------------|--------------|
| 300   | 2 : 1      | 2.04 : 1    | 0.35         |
|       | 2.5 : 1    | 2.54        | 0.35         |
|       | 3 : 1      | 3.0 : 1     | 0.33         |
|       | 3.5 : 1    | 3.53 : 1    | 0.30         |
|       | 4 : 1      | 4.10 : 1    | 0.25         |
| D300A | 4 : 1      | 4.00 : 1    | 0.35         |
|       | 4.5 : 1    | 4.48 : 1    | 0.33         |
|       | 5 : 1      | 5.05 : 1    | 0.30         |
|       | 5.5 : 1    | 5.52 : 1    | 0.25         |
|       | 6 : 1      | 5.90 : 1    | 0.25         |
|       | 6.5 : 1    | 6.56 : 1    | 0.20         |
|       | 7 : 1      | 7.06 : 1    | 0.20         |
|       | 7.5 : 1    | 7.63 : 1    | 0.17         |

**RCMMD ENGINE:** CUMMINS VTA28-M; CAT 3412TA; GARDNER 6LYT1; DETROIT 12V92TA; BAUDOUIN 12P15.2S DAUHATSU M5S

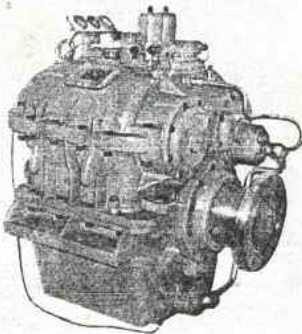
## 750 750 HP/1000 RPM

**CHRCTRSTC:** Design approved by ABS, hydro and electro-magnetic control, oil pump has 3 options, i.e. 600 RPM, 750 RPM and 1000 RPM

**L X W X H:** 1117 X 920 X 1170 mm N.W. 1600 kg

| NOMINAL RATIO | EXACT RATIO | RATE(HP/RPM) |
|---------------|-------------|--------------|
| 1.5 : 1       | 1.49 : 1    | 0.75         |
| 2 : 1         | 1.97 : 1    | 0.75         |
| 2.5 : 1       | 2.48 : 1    | 0.75         |
| 3 : 1         | 2.92 : 1    | 0.75         |

**RCMMD ENGINE:** MAN 5L20/27; WARTSILA 4R22, YANMAR S185A-ET; SKL6VD26/20AL-1



## MB450I 1100HP/2100RPM

**CHRCTRSTC:** Hydraulic control, PTO unit supplied on special order

**BELL HOUSING:** SAE 00, 0, 1/2 **FLANGE:** 14", 16", 18"  
**L X W X H:** 930 X 940 X 1385 mm N.W. 1800 kg

| NOMINAL RATIO | EXACT RATIO | RATE(HP/RPM) |
|---------------|-------------|--------------|
| 4.5 : 1       | 4.483 : 1   | 0.55         |
| 5 : 1         | 5.077 : 1   | 0.50         |
| 5.5 : 1       | 5.625 : 1   | 0.46         |
| 6 : 1         | 6.00 : 1    | 0.42         |
| 6.5 : 1       | 6.609 : 1   | 0.38         |
| 7 : 1         | 6.955 : 1   | 0.36         |

**RCMMD ENGINE:** CAT 3508TA; PERKINS CV12M800Ti; GARDNER 6LYT1; CUMMINS KTA38-M; DORMAN SEAKING8(B); BAUDOUIN 12P15.2SR

